



**COVID-19 and RSV
epi update**

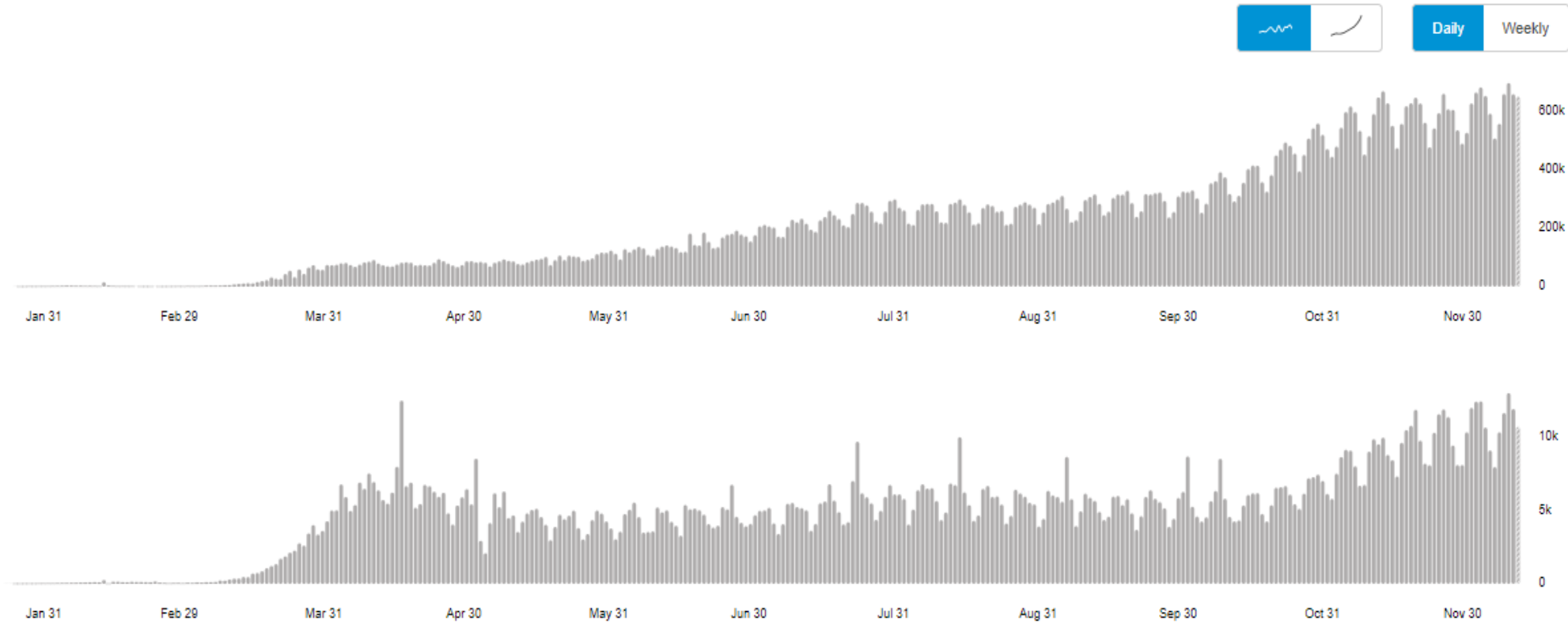
Prof David Durrheim

The pandemic accelerates globally

Global Situation

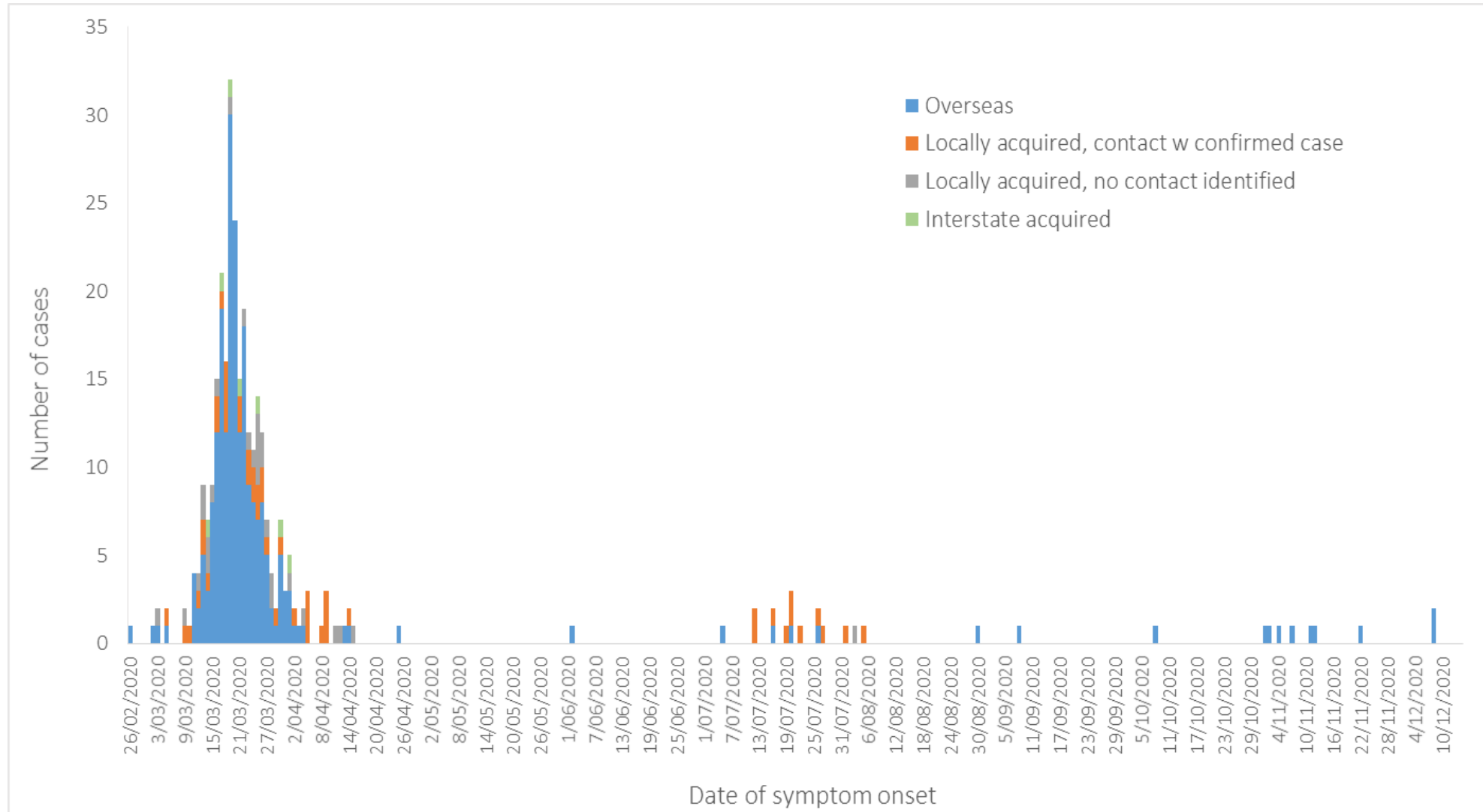
70,461,926
confirmed cases

1,599,704
deaths

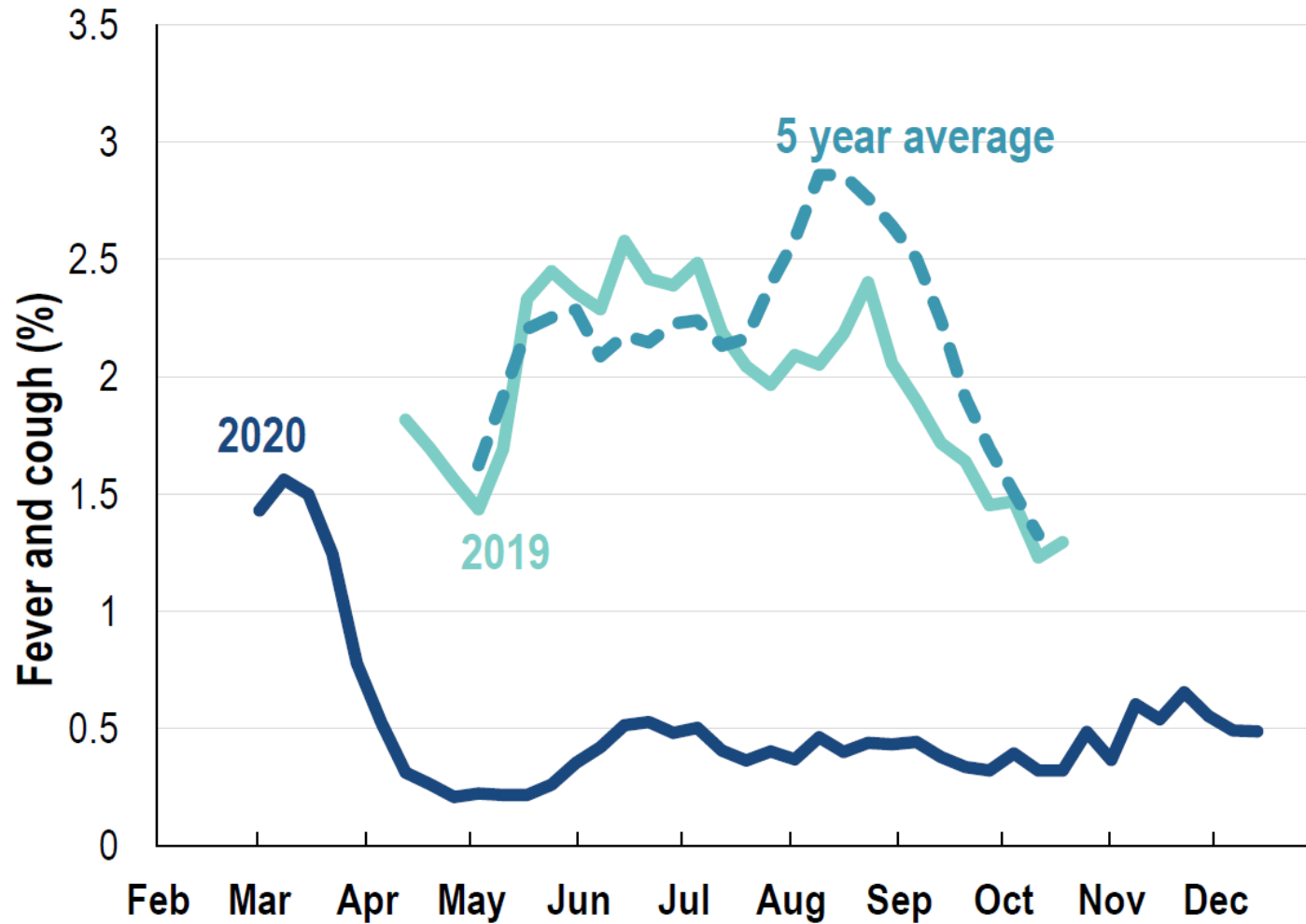


Source: World Health Organization
▨ Data may be incomplete for the current day or week.

HNELHD confirmed COVID-19 cases, by exposure source from 26 Feb to 14 Dec 2020

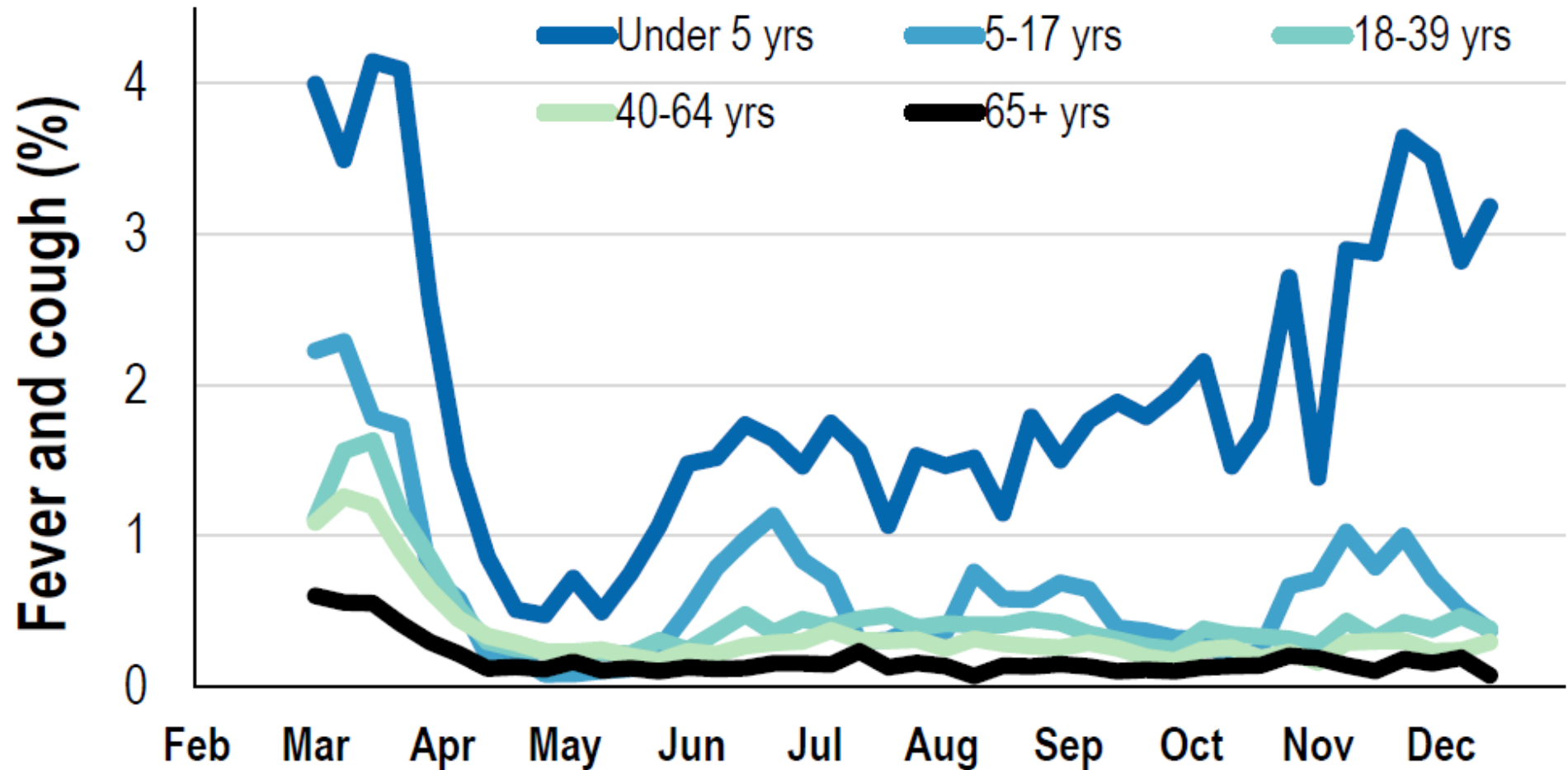


Flutracking weekly symptom rate 2020 vs 2019 and 5 year average



*5 year average is calculated using 2015, 2016, 2017, 2018 and 2019 data
^ Data are age standardised in this chart

ILI rates by age-group, Australia, 2020

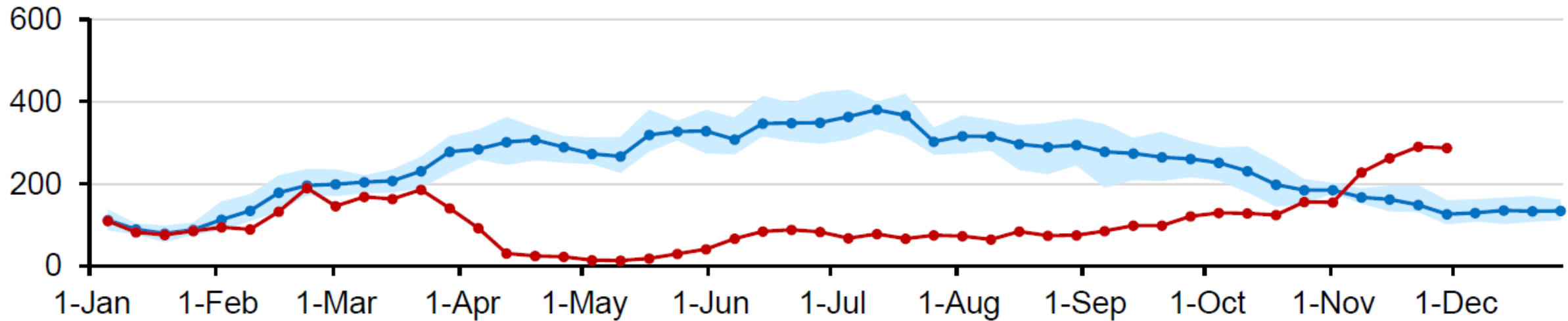


NSW sentinel lab testing, Jan-Nov 2020

Specimen collection date	PCR tests conducted	Influenza A		Influenza B		RSV
		No.	%Pos	No.	%Pos	
1 Jan — 29 November 2020						
Total	1,225,426	6,629	0.54	955	0.08	15,687
Month ending						
3 February *	34,953	2,508	7.18	401	1.15	752
1 March	40,575	2,363	5.82	315	0.78	1,118
29 March	85,238	1,549	1.82	200	0.23	1,977
3 May *	54,128	70	0.13	13	0.02	410
31 May	71,525	35	0.05	6	0.01	115
28 June	130,922	42	0.03	11	0.01	178
2 August *	227,152	34	0.01	2	<0.01	209
30 August	174,594	9	0.01	2	<0.01	299
27 September	145,489	6	<0.01	1	<0.01	866
1 November *	131,686	7	0.01	1	<0.01	3,508
29 November	129,164	6	<0.01	3	<0.01	6,255
Week ending						
8 November	31,883	1	<0.01	2	0.01	1,580
15 November	37,010	3	0.01	0	-	1,693
22 November	32,467	2	0.01	0	-	1,433
29 November	27,804	0	-	1	<0.01	1,549

NSW weekly counts of unplanned ED presentations, 2020, compared to the same week in the previous 5 years

Bronchiolitis





Healthy Profession.
Healthy Australia.

Keeping your practice COVID-safe





RACGP

Royal Australian College of General Practitioners

Healthy Profession.
Healthy Australia.

Managing patients who present with respiratory symptoms



Patient with respiratory symptoms

- **Preparation**

- Isolation space
- Adequate PPE supplies
- Triage
- Mask patient

- **Swabbing**

- Gloves
- Surgical mask
- Eye Protection

- **Cleaning**

- Doffing
- Donning
- Detergent then disinfectant then dry

Retain swab parallel to nasal floor and point swab no higher than the external ear canal opening

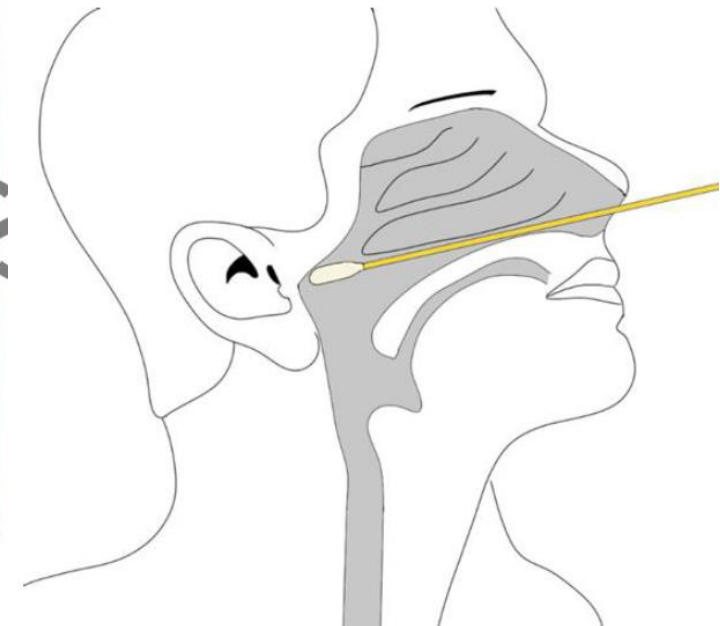
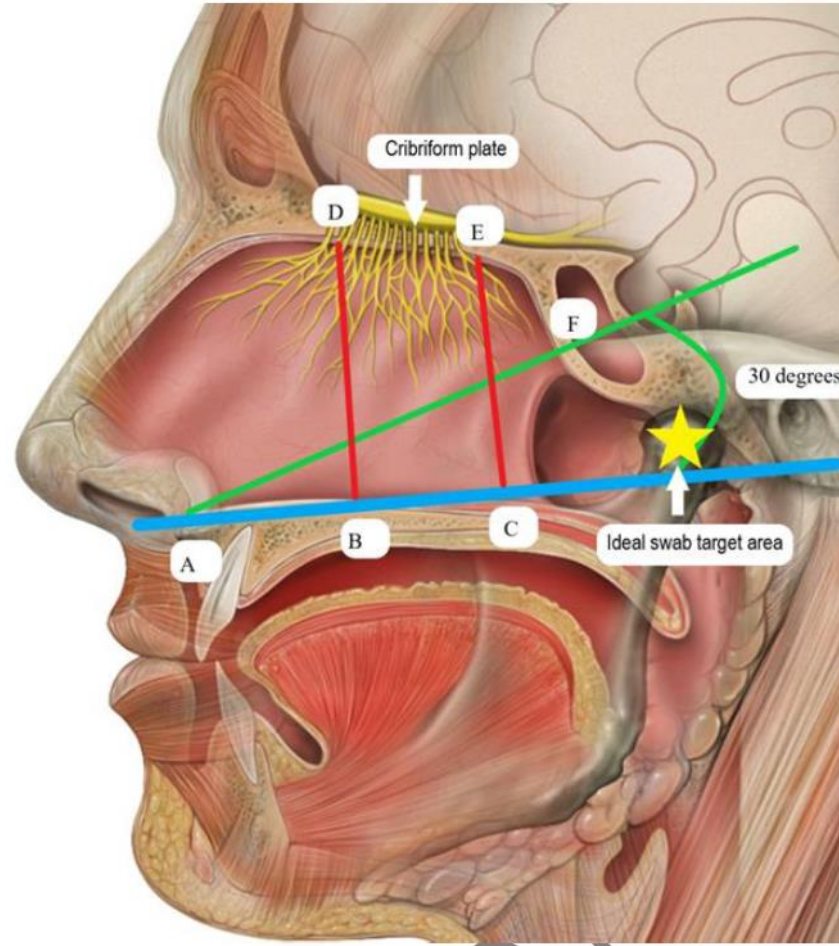
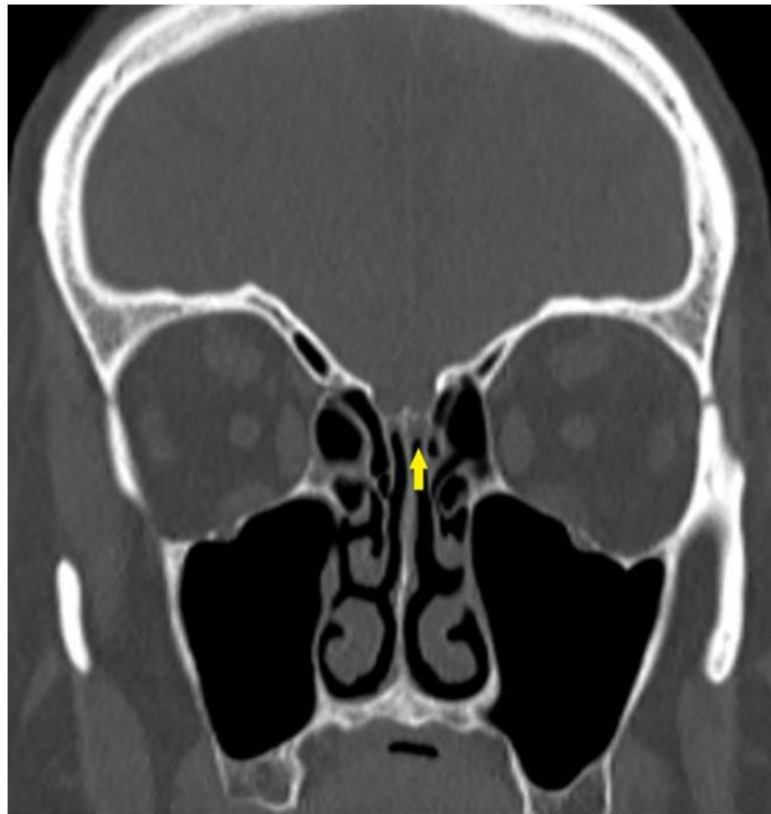


Figure 1 – CT sinuses coronal view showing defect in the left cribriform plate

