



The Clinical Benefits of Multidisciplinary Team Care in Residential Aged Care Facilities

PHN ONLINE EDUCATION SERIES

With the introduction of new COVID-19 temporary Medicare Benefits Schedule (MBS) item numbers for Allied Health Providers and GP's in Residential Aged Care, please join us for this informative three part series of online events.

The livestream webinars will outline these new MBS changes, what they mean for GP referrers and the benefits of Allied Health referrals for patients residing in Aged Care facilities. Speakers include a range of health professionals with experience in the MBS, deconditioning, physical therapy, chronic disease management, dementia and mental health.

SERIES LEARNING OUTCOMES:

At the end of these workshops, participants will be able to:

- Describe the critical roles that general practice clinicians have to facilitate additional access to allied health services for residents with dementia and other complex medical needs
- Recall key elements of the new Allied Health Services in RACFs – COVID Allied Health Package
- Describe the new temporary MBS items for multidisciplinary care planning and health assessments, and locate relevant fact sheets
- Outline steps required to refer a resident to extended allied health treatment through the new MBS items
- Discuss with colleagues how to best deliver and facilitate these collaborative services efficiently
- Understand the clinical roles of a variety of Allied Health professionals specifically within a Residential Aged Care setting.

The Clinical Benefits of Multidisciplinary Team Care in Residential Aged Care Facilities

PHYSICAL THERAPY FOR DECONDITIONING IN RACFs

Session 1 will discuss the following:

- Overview of vulnerability of residents to deconditioning with particular reference to COVID-19
- Service provision options by allied health to address deconditioning
- Overview of the new allied health program initiative - what it is, and how it works
- Overview of the referral processes and MBS requirements
- Summary of the MBS item numbers available for clinicians, and claiming requirements.
- Overview of the role of an Exercise Physiologist & Occupational Therapist for the deconditioning patient including case studies.

WHO: GPs, Allied Health, Residential Aged Care Staff, Nurses, Practice Managers

WHEN: Wednesday 6th October 2021, 6:30 pm – 8:00 pm

WHERE: Online via Livestream webinar

The webinar recording and presenter slides are now available in our [PHN Education Library](#)

SPEAKERS:

DR JAMES WOLSTENHOLME (GP Facilitator) works at Mingara Medical Centre on the Central Coast and supports a large cohort of older patients residing at home and in Residential Aged Care Facilities.



WENDY O'MEARA is an Associate Education Consultant with Larter Consulting as well as an RN and Practice Manager in Gisborne, Victoria. She has a long and diverse history in general practice, spanning 20 years. She began as a nurse in a general practice in 2000 before moving to her current role as Senior Operations Manager in a 20 GP general practice.



JOHN STEVENS is an Accredited Exercise Physiologist from Taree and is the Director of Kinetic Medicine. He serves as a Clinical Educator with University of Sydney and the University of New England and is the Current Co-Chair of Exercise and Sport Science Australia (NSW Chapter). John's clinical interests lie in managing pain and mental health across the lifespan through integrated physical and behavioural strategies.



ELLEN MARSHALL is a Senior Occupational Therapist with Community Therapy based in Newcastle. Ellen provides clinical Aged Care services for pain management program, functional assessment, ACFI assessment, pressure care, falls educations and risk assessments and manual handling education.



The Clinical Benefits of Multidisciplinary Team Care in Residential Aged Care Facilities

CHRONIC DISEASE MANAGEMENT WITHIN RACFs

Session 2 will discuss the following:

- Brief overview of relevant findings of the Royal Commission into Aged Care Quality and Safety
- In depth explanation of the temporary MBS item numbers available to allied health providers in RACFs to encourage uptake; including item number requirements, rebates and additional incentives
- Explanation of the Aboriginal and Torres Strait Islander health assessment and benefits to eligible residents within RACFs
- Discussion of the roles that GPs, allied health and RACFs can play to effectively implement this initiative in order to achieve optimum outcomes for residents and how to best integrate this new initiative into general practice business.
- Description of Department of Veterans' Affairs (DVA) treatment cycles
- Overview of the role of a Diabetes Educator & Dietician for patients with chronic disease including case studies.

WHO: GPs, Allied Health, Residential Aged Care Staff, Nurses, Practice Managers

WHEN: Wednesday 27th October 2021, 6:30 pm – 8:00 pm

WHERE: Online via Livestream webinar

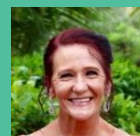
RSVP: Please [click here](#) to register. Slido will be used on the night for questions and evaluation, please go to [slido.com](https://www.slido.com), enter event code: **AH2**

SPEAKERS:

DR DAVID HEALEY (GP Facilitator) works at Faulkner Street Medical Practice in Armidale and is a long-standing rural GP with training in Aged Care and Palliative Care. He has worked for many years caring for residents in Aged Care Facilities.



WENDY O'MEARA is an Associate Education Consultant with Larter Consulting as well as an RN and Practice Manager in Gisborne, Victoria. She has a long and diverse history in general practice, spanning 20 years. She began as a nurse in a general practice in 2000 before moving to her current role as Senior Operations Manager in a 20 GP general practice.



POLLYEMMA ANTEES is an Accredited Practising Dietician and Credentialed Diabetes Educator with 20 years of working in rural and remote health focusing on chronic health conditions including in RACFs to improve nutrition status of residents. Pollyemma has an interest in educating health professionals in updating diabetes knowledge and working with clients to improve self management of their diabetes.



ROWAN DAVISON is an experienced Accredited Practising Dietitian with expertise in helping patients with chronic disease management as well as an interest in gastrointestinal health. Rowan services a range of residential aged care facilities in the region, in addition to previous work with NSW Health within the aged sector.



The Clinical Benefits of Multidisciplinary Team Care in Residential Aged Care Facilities

MENTAL HEALTH INITIATIVES FOR RACFs

Session 3 will discuss the following:

- Outline of the impact that COVID-19 has had on the mental health of many residents in RACFs
- Overview of mental health conditions and eligibility of residents to access this initiative
- Full explanation of expansion of the "Better Access" program for residents including MBS item numbers and requirements; and referral processes including to psychologists, occupational therapists and social workers
- Overview of the benefits to residents of additional therapies
- Overview of the role of Allied Health Clinicians working with patients with mental health conditions including case studies.

WHO: GPs, Allied Health, Residential Aged Care Staff, Nurses, Practice Managers

WHEN: Wednesday 17th November 2021, 6:30 pm – 8:00 pm

WHERE: Online via Livestream webinar

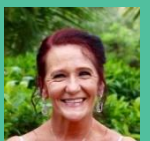
RSVP: Please [click here](#) to register. Slido will be used on the night for questions and evaluation, please go to [slido.com](https://www.slido.com), enter event code: **AH3**

SPEAKERS:

DR MAREE PUXTY (GP Facilitator) works at West Armidale Medical Centre and is the Chair of NE Division of General Practice, Chair of HNECC PHN Clinical Council and Adjunct Associate Professor in the School of Rural Medicine, UNE. Dr Puxty has special interests in medical education and psychiatry.



WENDY O'MEARA is an Associate Education Consultant with Larter Consulting as well as an RN and Practice Manager in Gisborne, Victoria. She has a long and diverse history in general practice, spanning 20 years. She began as a nurse in a general practice in 2000 before moving to her current role as Senior Operations Manager in a 20 GP general practice.



DR JULIE BAJIC SMITH is a registered psychologist who has worked in aged care for over a decade both as a clinician and a researcher. She has significant experience in assessment and the application of psychological treatments to older adults. Julie has developed several preventative psychological group programs for older adults entering residential care which won Positive Living in Aged Care Awards. Julie is currently supervising mental health clinicians across several residential aged care facilities and delivers education and training to the aged care workforce.



Note: You must register for each individual session to receive all webinar joining links.

For all webinar enquires please contact the PHN Education Team at education@thephn.com.au

These livestream webinars will be recorded and become available in the [PHN Education Library](#)