

Flu Clinics during COVID-19

Presenter: Kaycee Wisemantel

Date: 9th April 2020

SLIDO: mastermindFC




Immunisation during COVID-19

NSW Health have provided advice that will help to assist with the planning and managing of vaccination clinics “ Vaccination clinics implementation during COVID-19” www.health.nsw.gov.au/immunisation/Pages/flu.aspx

- Pneumococcal vaccine and COVID-19
- Immunisation services must continue
- Recommendations for venues
- Social distancing measures
- **Clinic set up**
- Vaccination process
- **Consider alternate models**

NSW Immunisation Schedule
updated March 2020



AGE	DISEASE	VACCINE
CHILDHOOD VACCINES		
Birth	Hepatitis B	H-B-VAX II OR ENGERIX B
6 weeks	Diphtheria, tetanus, pertussis, Haemophilus influenzae type b, hepatitis B, polio	INFANRIX HEXA
	Pneumococcal	PREVENAR 13
4 months	Rotavirus	ROTARIX
	Diphtheria, tetanus, pertussis, Haemophilus influenzae type b, hepatitis B, polio	INFANRIX HEXA
	Pneumococcal	PREVENAR 13
6 months ¹	Rotavirus	ROTARIX
	Diphtheria, tetanus, pertussis, Haemophilus influenzae type b, hepatitis B, polio	INFANRIX HEXA
12 months	Meningococcal ACWY	NIMENRIX
	Pneumococcal	PREVENAR 13
18 months	Measles, mumps, rubella	MMR II OR PRIORIX
	Diphtheria, tetanus, pertussis	INFANRIX OR TRIPACEL
	Measles, mumps, rubella, varicella	PRIORIX TETRA OR PROQUAD
4 years ²	Haemophilus influenzae type b	ACT-HIB
	Diphtheria, tetanus, pertussis, polio	INFANRIX-IPV OR QUADRACEL
ADOLESCENT VACCINES - SCHOOL VACCINATION PROGRAM		
Year 7	Diphtheria, tetanus, pertussis	BOOSTRIX
	Human papillomavirus (2 doses)	GARDASIL 9
Year 10	Meningococcal ACWY	NIMENRIX
ADULT VACCINES		
Pregnant women	Influenza (Annually any trimester)	INFLUENZA
	Pertussis (ideally between 20-32 weeks)	BOOSTRIX OR ADACEL
65 years and over	Influenza (Annually)	FLUAD QUAD
	Pneumococcal (One dose, unless medical risk factors ^{3,4})	PNEUMOVAX 23
70 years (Catch-up for 71-79 years until 31 October 2020)	Zoster	ZOSTAVAX
AT RISK GROUPS		
All children 6 months to < 5 years ⁴		
Aboriginal people 6 months and over	Influenza (annual)	INFLUENZA
6 months and over with medical risk conditions ⁴		
Aboriginal people 15-49 years with medical risk factors	Pneumococcal ¹	PNEUMOVAX 23
Aboriginal people 50 years and over		

1 At risk children require an additional dose of pneumococcal (Prevenar 13). 2 At risk children require an additional dose of pneumococcal (Pneumovax 23). 3 Refer to the current edition of The Australian Immunisation Handbook for timing of doses. 4 Refer to the current online edition of The Australian Immunisation Handbook for all medical risk factors and conditions.

March 2020 © NSW Health, SHRN (PHN) 20020.

hneccphn.com.au

Healthy People | Healthy Communities

PPE



hneccphn.com.au

Healthy People | Healthy Communities

NSW Health Advice for clinic set up

Points to consider:

- Ensure that there is a process and a checklist to assess each patient
- Ensure there is a process to keep well patients separated from patients who are suspected of COVID-19
- Minimise patient movement through the clinic as much as possible
- Make alcohol hand rub or hand washing facilities available at the entrance to your practice/clinic area and ensure patients use these on entry and when leaving
- Designate specific times through the week for vaccination clinics to ensure that only well patients are in the clinic during those times
- Ensure that seating and standing queuing areas meet the current recommendations for social distancing. If standing mark each standing position with an “X”. If seated , chairs must be spaced appropriately to maintain social distancing and cleaned between each use

hneccphn.com.au

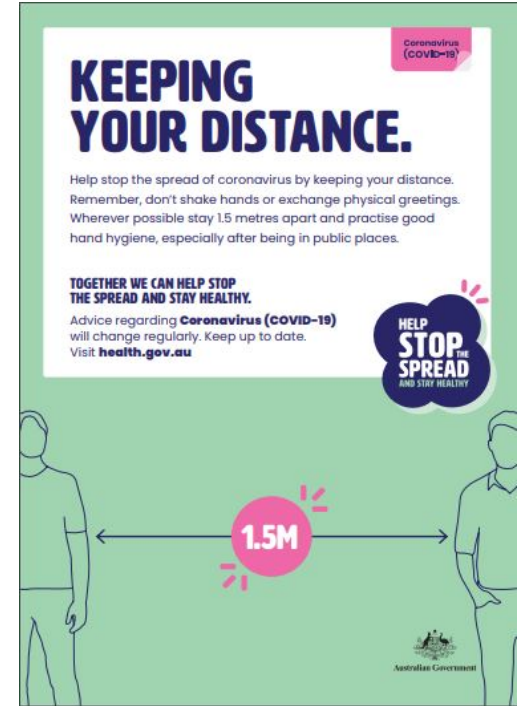
Healthy People | Healthy Communities

NSW Health Advice when considering alternate models

Points to consider:

- Maintain social distancing and enhanced infection control requirements
- Patient safety and comfort
- Requirements to maintain confidentiality and undertake pre-vaccination assessments
- Appropriate cold chain management
- Pre-vaccination waiting and post vaccination observation areas that provide social distancing

****It's highly recommended that you consult with your medical indemnity insurance provider to ensure coverage for amended policies and processes**



hneccphn.com.au

Healthy People | Healthy Communities

phn
HUNTER NEW ENGLAND
AND CENTRAL COAST

An Australian Government Initiative

A photograph of two individuals wearing face masks and rain gear. The person on the right is wearing a dark blue hooded rain jacket and a green and yellow patterned face mask. The person on the left is wearing a blue hooded rain jacket, red-rimmed glasses, and a blue face mask with a pink and white floral pattern. They are standing under a white tent. In the background, a building with a 'Windmill' logo is visible.

Example of a flu clinic during COVID-19 - locally



Pius X Aboriginal
Corporation
@piusxac

Pius received the vaccines at 11am on Thursday 2nd April. We put on our Facebook page we were having a drive thru clinic from 2pm till 4pm Thursday and Friday 10 till 2 and 2 till 4. We cancelled the afternoon clinic on the Friday as we had exhausted all our supplies by 11.30 Friday. We did 500 vaccinations in 3 and ¾ hours. We had 4 registered nurses and we had to utilise our IT officer as a traffic controller. We had no reactions and we plan to use this model when our next issue of flu vaccines arrives. We were too busy to take photos.

ROSEMARY ROSE (ROS)

RN. BN.MHM

Nurse Manager/ Clinic Coordinator

Pius X Aboriginal Corporation

hneccphn.com.au

Healthy People | Healthy Communities

Facebook



Liane Markey

March 30 at 10:00 PM

How is everyone giving flu vaccinations this year? Traditional flu clinics won't be suitable due to social distancing rules, too many people in the waiting room. All our respiratory patients are seen outside in the float though, reducing risk in the waiting room to well patients. Would love to hear your ideas peeps 😊

👍 You, Jan Elle and Julianne McMillan 10 Comments Seen by 114



Like



Comment

View 2 more comments



Kaycee Wisemantel 🛡️ Would love to hear what everyone is doing for their immunisation clinics during COVID-19

Like · Reply · 1w



Candice Branch We've purchased a 3x3 awning with 2 sides and will erect it in the car park to hold our Well Clinic. One doctor running it only. Checking everyone's temperature and only 2 patients at a time with a 15 minute layover, so as they are leaving new ones are arriving. Single use pre-check list and cheap pens for consent to be signed, every patient gets a free pen! GP will have list of patients with demographics to identify, will write batch number down next to for input at end of clinic and to upload to AIR. He will be in PPE (even though only well patients should be attending) Patients to sanitise hands before entering tent. Chairs in car park are able to be wiped down by reception staff between patients. We are doing a mock run through this afternoon!

Like · Reply · 1w · Edited



2



Examples of flu clinics during COVID-19 across the nation as seen on FB



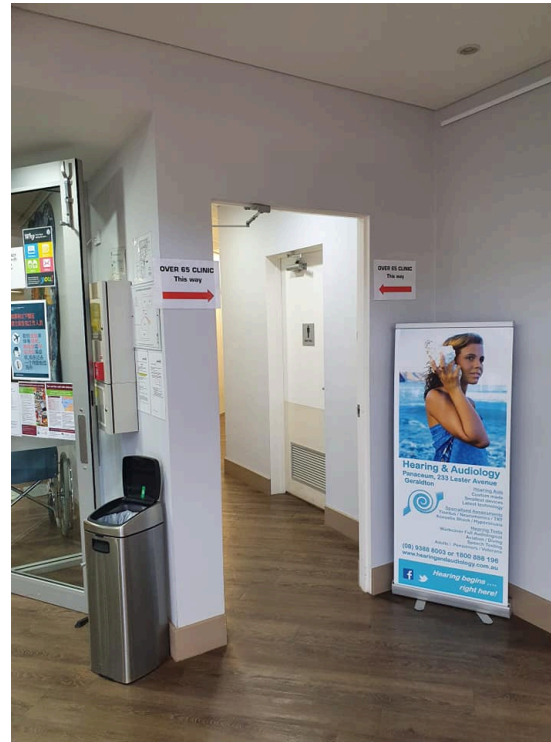
In the NT

hneccphn.com.au

Healthy **People** | Healthy **Communities**

Examples of flu clinics during COVID-19 across the nation as seen on FB

In WA



hneccphn.com.au

Healthy People | Healthy Communities

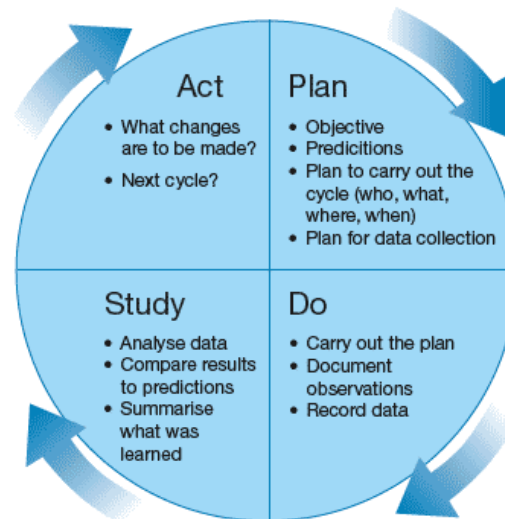
QI Activity

If you wish to use your flu clinics as a QI activity don't forget:

QIM4. Proportion of patients aged 65 and over who were immunised against influenza

QIM5. Proportion of patients with diabetes who were immunised against influenza

QIM6. Proportion of patients with COPD who were immunised against influenza



Resources Available



PneumoSmart Vaccination Tool



Australia's trusted independent immunisation experts



Flu clinics during COVID-19



T: 1300 066 055



hneccphn.com.au

Healthy People | Healthy Communities

CLINICAL SOFTWARE & THE 2020 FLU VACCINE

Best Practice and Medical Director have released the April 2020 data updates
Update your clinical software as soon as possible

- **Best Practice:** Need to download this release by visiting the downloads section of the [Best Practice website](#) (scroll down to data updates) or following the link on the 'elevate' notice which was sent to all users via email on Monday 30 March 2020. Best Practice advised that it is a simple update and external IT support is not generally required to do the update. Further information: [Best Practice](#) or call 1300 401 111
- **Medical Director:** Unless automatic updates have been set, practices need to download the data update by visiting the clinical update download page on the [Medical Director](#) website. Further information: [Medical Director](#) or call 1300 300 161.

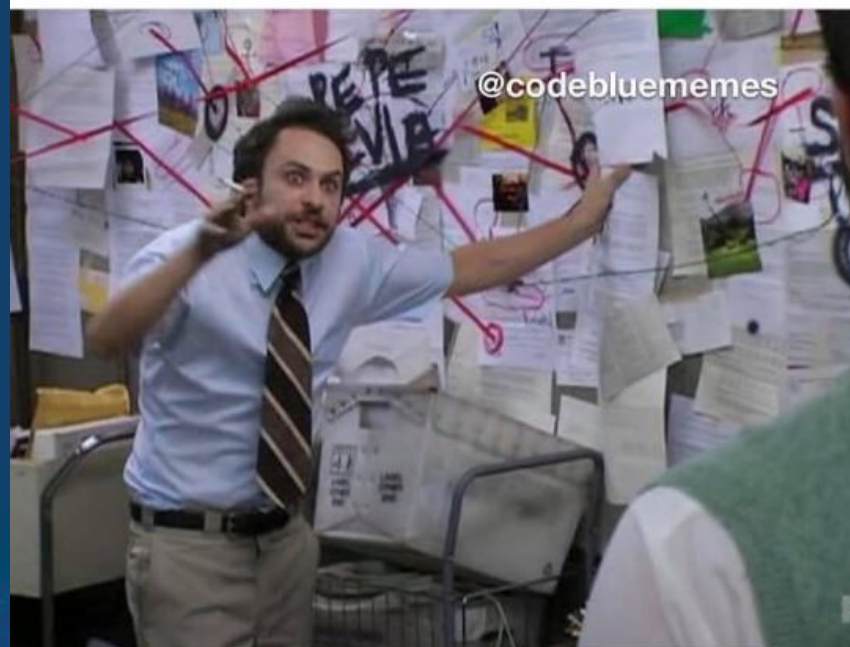
RECORDING IMMUNISATIONS TO THE AUSTRALIAN IMMUNISATION REGISTER (AIR)

The AIR is used to:

- determine an individual's immunisation status, regardless of who immunised them
- determine a person's eligibility for some family assistance payments
- provide an Immunisation History Statement to prove their immunisation status for childcare, school, employment or travel purposes
- monitor immunisation coverage levels and service delivery, which can help to identify regions at risk during disease outbreaks
- measure vaccination coverage at a local, state and national level.

Thank you

Me trying to explain the COVID-19 policies that were changed 6 times today to the oncoming shift



**When I heard 2020 was
going to be "The Year of
the Nurse" this is not
what I expected..**