

Residential Aged Care Facilities

CCLHD COVID-19 Response

Lynne Bickerstaff

Director of Nursing and Midwifery
Health Services Functional Area Coordinator



October 2020



Health
Central Coast
Local Health District



Background- Prevention

- Identification of the vulnerable communities within the district due to COVID-19
- Collaboration with the RACF's
- Collation of all RACF's information into a centralised database for use in all disaster situations
- Development of Rapid Swabs Teams
- Partnering with the PHN on all levels
- Lessons learnt following assistance to a Disability Group Home following a Positive Healthcare Worker



Working with Residential Aged Care Facilities – Preparation

- Information gathering surveys.
- Table Top Exercises
 - Captured 34/36 RACF Facilities;
 - Reporting process to the ministry of non-engaged RACF's;
 - Post exercise surveys;
 - High Level table top exercise with key stakeholders
- Site Visits.
- Revision of RACF management plans.
- Education support:
 - Train the trainer in Donning and Doffing;
 - Swabbing training.



CCLHD/ PHN/ PHU Tabletop

Good Collaboration

Lessons learnt

- Need to development of a Aged Care Response Team to assist RACF in the event of an outbreak
- Direct admissions to hospital from RACF

CCLHD- Response

- Development of the Aged Care Response Team
 - Outline services CCLHD can provide to the facilities in the event of an outbreak
 - Risk assessment/decision making of residents requiring transfer to hospital



Partnering with GP's

AIM

- Well defined partnerships with GP's on the Central Coast
- Understanding that each response will be different and cannot be defined into one process

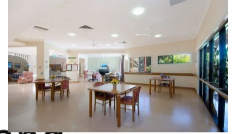


Communities of Practice “COP”



Health
Central Coast
Local Health District

Next Steps



- Continue to partner with RACFs to assist and collaborate as required
- Roll out of Infection Control Train the Trainer to all RACFs
- Evaluation of scenario tabletops- and provide further education as request
- Establish and commence Central Coast COP

Uniting



Presbyterian Aged Care

BlueWave
LIVING



CHRISTADELPHIAN
AGED CARE

HammondCare h.

THE SALVATION ARMY
Aged Care Plus

Southern CrossCare
NSW & ACT

The Orchards
Aged Care



Lake Haven Masonic Village
Residential Care, Retirement Living & Care at Home

Peninsula
VILLAGES



HALL & PRIOR
Health & Aged Care Group

WILLIAM CAPE
GARDENS



AUBREY DOWNER
Aged Care Home
23 Sunnyside Avenue,
Point Clare, NSW
2250

Anglican
care

hakea
GROVE

Opal specialist aged care

yallambee
LODGE

THOMPSON
HEALTH CARE

BaptistCare



CENTRAL COAST
COMMUNITY CARE
ASSOCIATION LIMITED



catholic healthcare



NSW
GOVERNMENT

Health
Central Coast
Local Health District