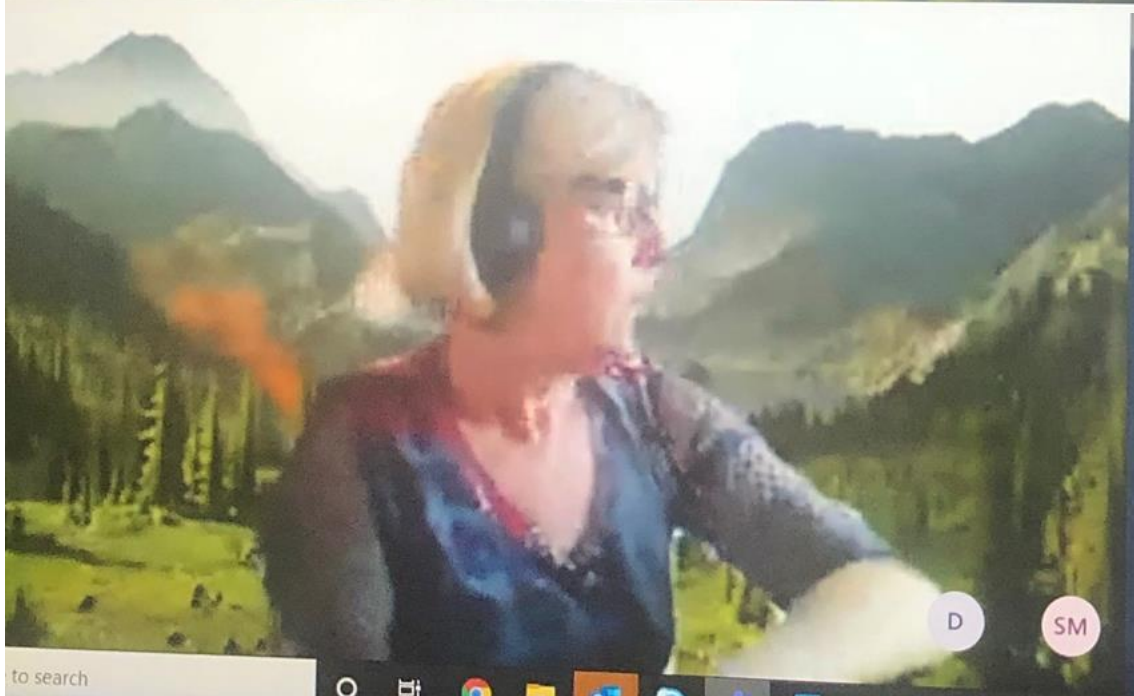


What was the problem?

- COVID-19 is of particular concern in the aged care population and is likely to contribute to considerable increase in mortality and morbidity within aged care facilities.
- **OBJECTIVES**
 - Minimise outbreaks in residential aged care facilities
 - Assist RACFs to plan, prepare, detect and respond to COVID-19 outbreaks in their facility
 - Formulate a plan to source medical equipment, staffing and consumables for RACFs to address identified gaps

What was the plan?

- HNECCPHN & HNELHD came together to plan the RACF Preparedness Support Strategy for COVID19
- Identified who needed to be involved in group to form the governance
- Identified the multiple high level risks
- Project plan was developed, monitored and implemented
- Brain stormed and researched how to mitigate these risks
- Strategy group meet weekly to monitor progress and escalate barriers



to search

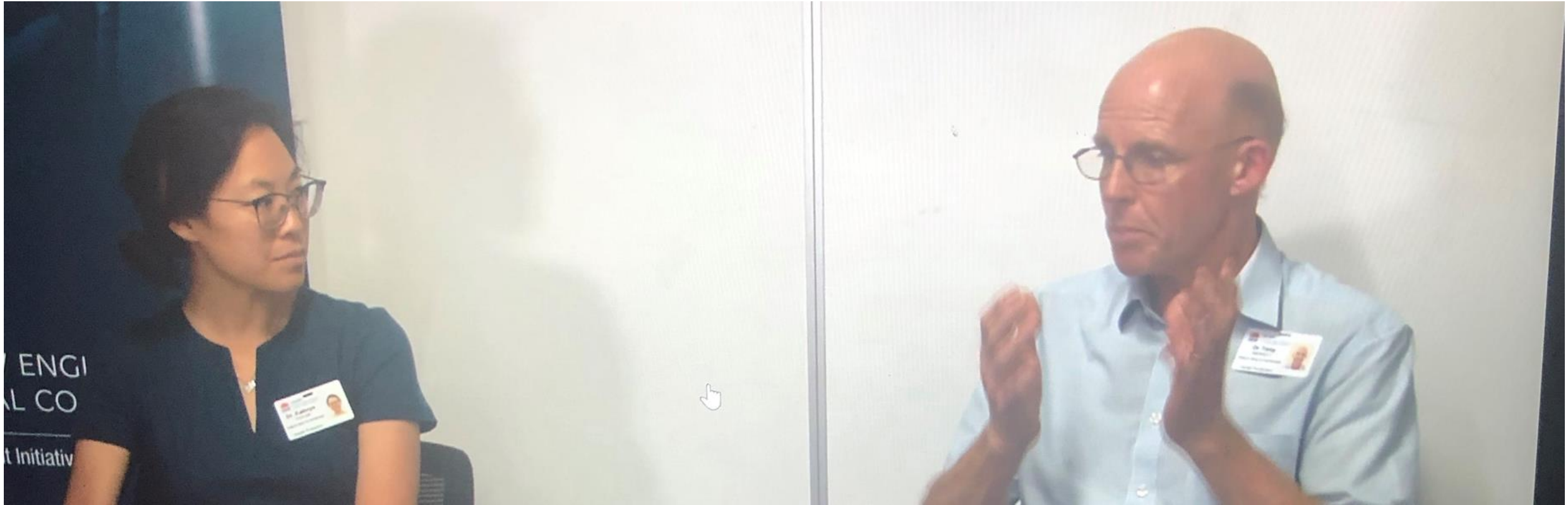
What did we do? And why it worked

- Building on existing relationships
- Weekly online meetings with RACFs
- Forging new relationships
- Capacity Tracker



What did we do? And why it worked

- HealthPathways – existing governance
- Commissioned education resources
- Aged Care Webinars - updates with current advice
- Outbreak Management Plans



• Clinical management of COVID patients

- Very few patients have needed hospital admission
- Those that need clinical review have for the most part been managed by their GPs, with support from Gosford Hospital Infectious Diseases and the PHU
- Health Pathways update for Central Coast in progress

• Release from isolation

- Current recommendation for release is based on clinical progress such as symptoms



What were the outcomes: not necessarily expected

- No COVID-19 outbreaks in our region
- Increased use of Telehealth
- New relationships
- New opportunities to continue to work together
- Community of Practice (CoP)
- Networks
- Cross learnings



Acknowledgements

- ACE Service
 - Jane Gray, Director of Partnerships / Innovation and Research
 - Catherine Turner Executive Manager Quality – Commissioning and Improvement The PHN
 - Elizabeth Grist, Executive Director | Clinical Services, Nursing and Midwifery
 - Health Service Functional Area Coordinator (HSFAC)
 - Paul Craven, Executive Director - Children, Young People & Families, NSW Health Service & COVID Medical Controller
 - Dr Carolyn Hullick Director Emergency Medicine Belmont Hospital
 - Dr Jennifer Briggs GP in aged care
 - Jenny Carter Service Manager – Patient Flow Unit Hunter New England Local Health District
 - Leigh Darcy Special Projects Manager – Hunter Primary Care
 - Melissa Pickering and Gillian Isaccs CCLHD
 - Public Health Unit HNELHD / CCLHD
 - Our RACF partners