

Central Coast HealthPathways

Youth Mental Health and its impact on General Practice

24 November 2021

Erica Drew, Central Coast HealthPathways Manager

WE ACKNOWLEDGE THE TRADITIONAL OWNERS & CUSTODIANS OF THE
LAND THAT WE LIVE & WORK ON AS THE FIRST PEOPLE OF THIS COUNTRY.



Central Coast NSW

HealthPathways

For health professionals

<https://centralcoast.healthpathways.org.au>

Username: centralcoast

Password: 1connect

patient
CENTRAL COAST

info

For patients and the general community

<https://www.ccpatientinfo.org.au/>

No password required

HNECCPHN.COM.AU

PRIMARY
HEALTH
NETWORK

phn
HUNTER NEW ENGLAND
AND CENTRAL COAST
An Australian Government Initiative

HealthPathways is:

A systematic way to improve care between primary, secondary, and tertiary care.

An online decision support tool designed for use during general practice consultations.

Locally agreed information on how to assess and manage conditions, and how to refer patients to local services.

Agreement and clarity on access to services, who provides services, where, and when.

Search

Back

>

Print

Send Feedback

- + Home
- + COVID-19
- + Acute Services
- + Allied Health and Nursing
- + Child Health
- + Investigations
- + Legal and Ethical
- + Lifestyle & Preventive Care
- + Medical
- + Mental Health
- + Older Persons' Health
- + Pharmacology
- + Public Health
- + Specific Populations
- + Surgical
- + Women's Health
- + Our Health System
- + Service Directories

Health Alert

NSW Health:

- [Latest COVID-19 Case Locations and Alerts in NSW](#)
- [Interstate and New Zealand COVID-19 Case Locations](#)
- [Media Releases](#)

NSW Government – [Travel to and from NSW](#)

See [COVID-19 Vaccination](#) for all vaccine information, provider options, training, and procedures. [COVID-19 Testing and Referrals](#) for current testing options, and follow links on the [COVID-19 pages](#) for all other information.

To receive COVID-19 updates via email from HNECCPHN, subscribe [online](#).



About

HealthPathways



Education



Useful

Websites



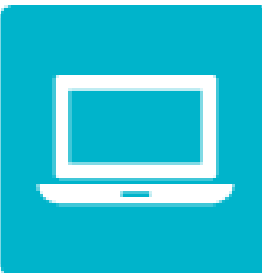
Directories



Patient Info



Calculators



PHN Education

Library



PBS

Health System News



NSW Health Alerts

- [Infectious Diseases Alerts](#)
- [Emergency Preparedness](#)



HNECCPHN COVID-19 webinars and livestreams

The recordings and presentation slides of the HNECCPHN COVID-19 related webinars and livestreams are available [here](#).

7 Sep

Head to Health Pop Up services

Head to Health Pop Up services have been developed to support the mental health of people of all ages in NSW, who are struggling during extended lockdown. Patients, family members, and clinicians can phone **1800-595-212**.

There is a Head to Health Pop Up Mental Health Hub at Suite 101, Level 1, Mariners Centre of Excellence Building, 1 Bryant Drive, Tuggerah.

See HNECCPHN – [Head to Health Pop Ups](#).

New and Updated Pathways

09 Nov

Community Nursing

Referrals

NEW

05 Nov

Travel Vaccination

REVIEWED

05 Nov

X-ray

NEW

03 Nov

COVID-19 PPE,

Infection Control, and

Exposure Response

NEW

03 Nov

Healthy Eating Services

for Older People

REVIEWED

[View more changes](#)

Relevant HealthPathways

- Central Coast HealthPathways – <https://centralcoast.healthpathways.org.au/>
- Username: centralcoast Password: 1connect

Clinical pathways

- [Acutely Disturbed Young Person](#)
- [Anxiety in Children and Youth](#)
- [Depression in Children and Youth](#)
- [Obsessive Compulsive Disorder in Children and Youth](#)
- [ADHD in Children and Youth](#)
 - [ADHD Medications for Children and Youth](#)
- [Youth Mental Health](#)
- [Deliberate Self-harm](#)
- [Suicidal Ideation and Intent](#)
- [Eating Disorders](#)
- [Psychosis](#)
 - [Antipsychotic Medication](#)
 - [Comparison of Adverse Effects of Some Antipsychotics](#)
- [Physical Health and Mental Illness](#)
- [Mental Health Stepped Care](#)
- [Scheduling and Compulsory Treatments](#)
- [Out-of-home Care for Children and Young Adults](#)
- [Behavioural Concerns in Children](#)
- [Child Abuse and Neglect](#)

Relevant HealthPathways

- Central Coast HealthPathways –
<https://centralcoast.healthpathways.org.au/>
- Username: centralcoast Password: 1connect

Referral pages

- [Urgent Mental Health Assessment](#)
- [Psychiatrist Assessment](#)
- [Child and Youth Mental Health Assessment](#)
- [Child and Youth Psychology and Counselling](#)
- [Child and Family Community Mental Health Support](#)
- [Non-clinical Community Mental Health Support](#)
- [Child Health Community Support Programs](#)
- [Online Mental Health Therapy for Children and Youth](#)
- [Access to Funded Psychological Services](#)
- [Eating Disorder Referrals](#)
- [Mental Health Helplines](#)
- [Mental Health Advice](#)
- [Eating Disorders Advice](#)
- [COVID-19 Mental Health Support](#)
- [Social Prescribing Support](#)
- [Child Developmental and Behavioural Assessment](#)
- [Child Protection Reporting](#)
- [Allied Health and Nursing](#)

Patient Info – for patients and the general community



Central Coast
<https://www.ccpatientinfo.org.au/>
No password required

patient info
CENTRAL COAST

Search

COVID-19

Home

Emergency Care

After Hours Services

Bushfire Information

Assault or Abuse

General Health

Child Health

Youth Health

Older Person's Health

Aboriginal and Torres Strait Islander Health

Women's Health

Men's Health

Transgender Health and Gender Diversity

Mental Health

Physical Health and Mental Illness

Sexual Health

Refugee Health in Adults

Smoking Cessation

Drugs and Alcohol

Keeping Healthy and Preventive Care

Domestic and Family Violence

Planning for End of Life

Carer Support

Local Health and Support Services

FEATURED TOPICS

COVID-19 Disability Info

COVID-19

COVID-19 Testing

COVID-19 & Aboriginal Health

COVID-19

COVID-19 Information

COVID-19

COVID-19 Vaccines

COVID-19

Mental Health Supports

Feedback

Print

Emergency care required

In an emergency **phone 000** immediately for an ambulance, or visit the closest hospital Emergency Department.

[Bushfire Information](#)

[Coronavirus Information](#)

Site partners

phn
HUNTER NEW ENGLAND
AND CENTRAL COAST
An Australian Government Initiative

Children, Young People & Families

Health
Central Coast
Local Health District

Site last updated

Monday, 15 November 2021

PRIMARY
HEALTH
NETWORK

phn
HUNTER NEW ENGLAND
AND CENTRAL COAST
An Australian Government Initiative

Contact Us – Central Coast HealthPathways Team

Central Coast NSW

HealthPathways

Back

<

>

Print

Send Feedback

Search

Home

Daily Updates

Terms of Use - HealthPathways

What is HealthPathways?

Using HealthPathways

Central Coast HealthPathways Team

COVID-19

Acute Services

Allied Health and Nursing

Central Coast HealthPathways Team

To contact the HealthPathways team either:

- use the **Send Feedback** button on any page in HealthPathways, or
- email CCHealthPathways@hneccphn.com.au

Feedback and phones are monitored during standard business hours, Monday to Friday.

About HealthPathways

Contact the HealthPathways Team

Disclaimer