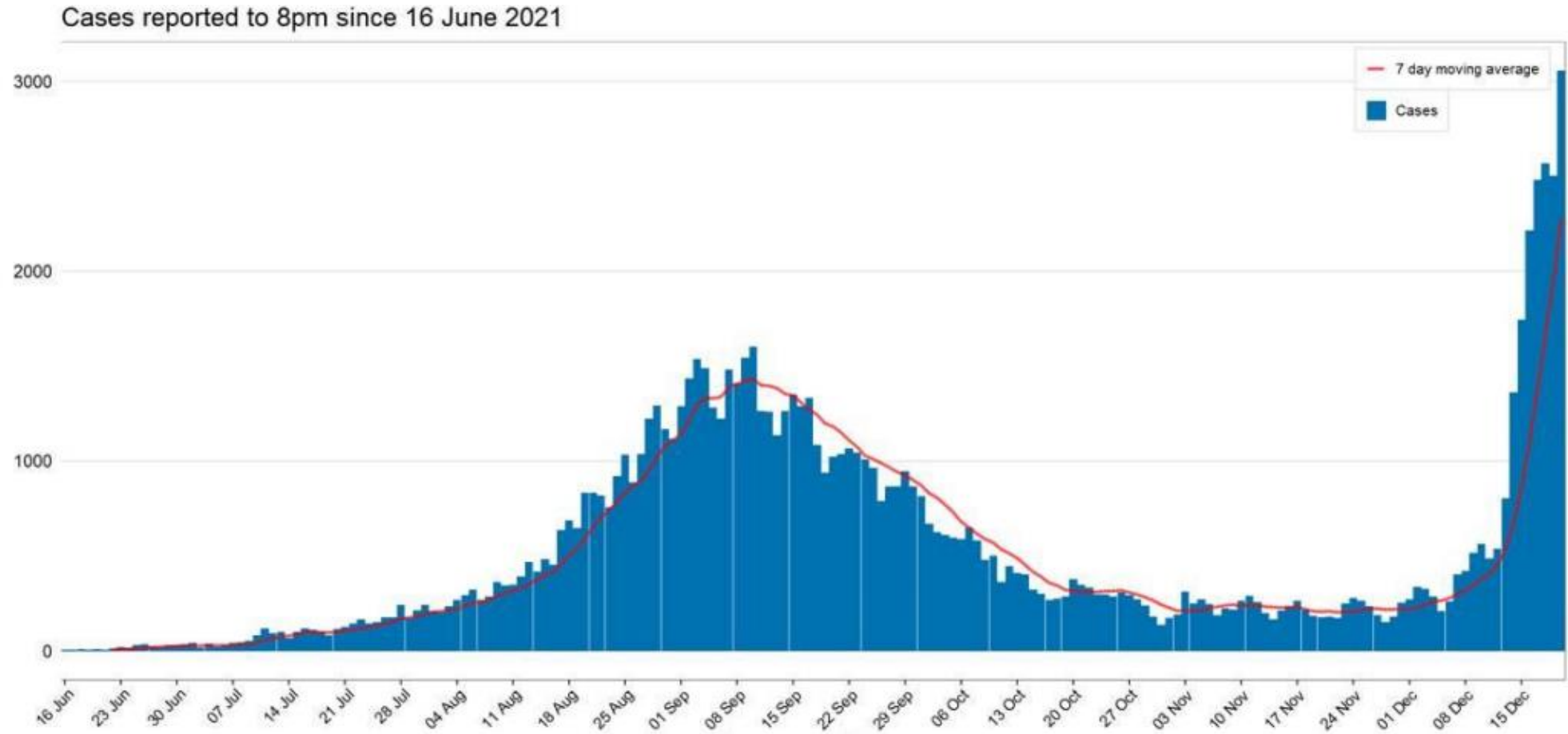


Public Health Update

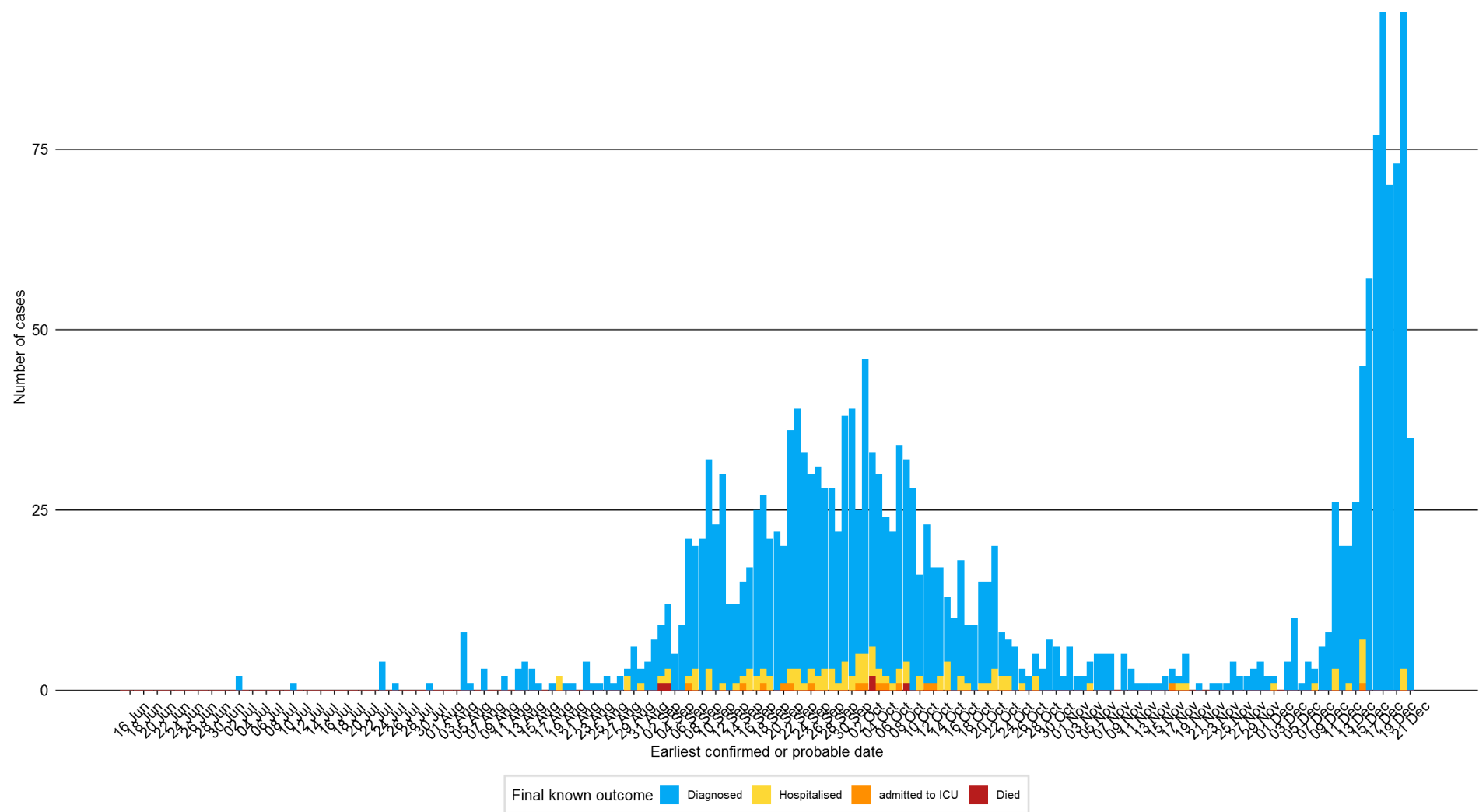
Dr Katherine Todd

Acting Director, Central Coast Local Health District

Epidemiology update



Central coast epi curve





Boosters and Omicron

- It seems likely that the rapid spread of Omicron relates to immune evasion rather than a major increase in transmissibility compared to previous strains
- ATAGI recommendations:
 - COVID-19 booster vaccination for anyone aged 18 and older who completed their primary course of COVID-19 vaccination 5 or more months ago.
 - To ensure timely provision of boosters, ATAGI recommends that those who become eligible for a COVID-19 booster dose before or during the December and New Year holiday period (i.e. up to 3 January 2022) can receive them earlier than 5 months.
 - timely receipt of a booster dose is particularly important for who have risk factors for severe disease (particularly older age and those with underlying medical conditions) or people with increased exposure risk (e.g. occupational risks or outbreak areas)
 - Both Comirnaty (Pfizer) or Spikevax (Moderna- 50µg) are recommended for use as a booster vaccine, and both are considered equally acceptable.
 - A third (primary) dose of COVID-19 vaccine is also recommended for anyone with severe immunocompromise, a minimum of two months after their second dose.

Changes to contact tracing

- Case interview prioritisation via text message
 - Have you been overseas?
 - Why did you get tested?
 - In the last week did you or a member of your household visit or work in:
 - Aged care or disability service
 - Hospital
 - Aboriginal Community
 - Prison or detention
 - School or childcare
 - GP/doctor
 - A workplace outside the home involved in providing essential goods and services (e.g. food, water, energy)
 - Case interview prioritisation via text message
- General information for cases about isolation and identification of close contacts

Contact management

- All close contacts will need to self-isolate for 7 days regardless of immunisation status, provided they have a nose and throat (PCR) test immediately, and again on day 6.
- For the next 7 days, they are asked to work from home, avoid mixing with other people, and not go to high-risk settings and have a test at day 12.
- Household close contacts **of interviewed cases**, including people who have been in the same residence, accommodation or care facility with the case for four hours or more while the case was infectious are sent a text message to inform them that they are close contacts and must follow the above instructions
- Cases are asked to alert people who they have spent time with in the two days (social contacts) before onset of symptoms (or before their positive test if they have no symptoms) and inform these social contacts that they should get a test and isolate until they receive a negative test result
- If a PHU becomes aware of: a venue or workplace at significant risk of, or with significant transmission, public health may classify other attendees as close contacts, and direct them to 7 days self-isolation. Where there is concern about onward transmission Household contacts may also be asked to test and isolate until negative.

Changes to clinical management

- From Friday 17 December, **cases who meet certain criteria and are assessed as low risk will receive an automated medical clearance notice from NSW Health allowing them to cease isolation 10 days after their positive test date.**
- The criteria for classifying a case as low-risk are:
 1. Under 50 years of age
 2. Have had two doses of COVID-19 vaccine
 3. Do not suffer from any chronic medical conditions
 4. Non-Indigenous.
- Low-risk cases will be given a web link providing advice on how to self-manage at home:
- They are also being advised to to call their GP or the NSW Health Support Line on 1800 960 933 if they have any mild symptoms or questions, and to call Triple Zero (000) if it is a medical emergency.

Contact tracing in GP settings

<p>NB: All exposure category decisions are based on a local risk assessment</p> <p>Case = Any confirmed positive case of COVID-19 (co-worker, patient, or other)</p>		<p><u>Transient Contact – Low Risk</u></p> <p>Transient, not face-to-face, limited contact that does not meet the definition of face-to-face contact</p> <p>OR</p> <p>In general, less than 30 minutes in a closed space*</p> <p>*Note: always subject to local documented risk assessment, including assessments of occupational exposures and of the closed space</p>	<p><u>Medium Risk Scenarios</u></p> <p>Any face-to-face contact within 1.5 metres and less than 15 minutes</p> <p>OR</p> <p>In general, greater than 30 mins in a closed space</p> <p>OR</p> <p>Based on agreed documented risk assessment including assessments of occupational exposures and of the physical environment</p>	<p><u>Highest Risk Scenarios</u></p> <p>Prolonged face-to-face contact within 1.5 metres and greater than 15 minutes</p> <p>OR</p> <p>Aerosol generating behaviours (AGBs e.g. coughing)</p> <p>OR Aerosol generating procedures (AGPs) OR</p> <p>Contact with multiple COVID-19 cases/suspected cases/probable cases</p>	
PPE worn during contact between case and contact	1. No effective PPE worn by case or contact e.g. no PPE or PPE with major breaches such as mask below nose	<div>Low to Moderate Risk</div> <div>Depending on risk assessment</div>	<div>Moderate Risk</div> <div>Depending on risk assessment</div>	Moderate Risk	High Risk
	2. Surgical mask only worn by contact i.e. no eye protection ➤ Case no PPE	Low Risk	<div>Low to Moderate Risk</div> <div>Depending on risk assessment</div>	<div>Moderate Risk</div> <div>Depending on risk assessment</div>	High Risk
	3. Surgical mask only worn by contact i.e. no eye protection ➤ Case wearing surgical mask	Low Risk	Low to Moderate Risk		<div>Moderate Risk</div> <div>Depending on risk assessment</div> OR <div>High Risk</div> <div>Depending on risk assessment</div>
	4. Contact in surgical mask and eye protection* with no concerns or breaches ➤ Case no PPE	Low Risk	Low Risk		Moderate Risk
	5. Contact in surgical mask and eye protection* with no concerns or breaches ➤ Case wearing surgical mask	Low Risk	Low Risk		<div>Low to Moderate Risk</div> <div>Depending on risk assessment</div> OR <div>Moderate Risk</div> <div>Depending on risk assessment</div>
	6. Contact in P2/N95 mask and eye protection* with no concerns or breaches ➤ Case either with or without PPE	Low Risk	Low Risk		Low Risk

*4. Use of gown/apron and gloves should be risk assessed based on individual incident, exposure to body substance and chances of environmental contamination

LOW RISK	Follow NSW Health advice for people with COVID-19 symptoms	LOW TO MODERATE RISK	Initial test usually not earlier than day 2 post exposure, but can work while result is pending retest day 5. Monitor for symptoms, test if symptomatic Wear a mask at all times on site including staff only spaces	MODERATE RISK	Leave workplace immediately and isolate Initial test usually not earlier than day 2 post exposure; isolate until day 5 and retest. If both negative, can return to work with repeat PCR testing every 72 hours or daily RAT. Clearance/exit test on day 12 Monitor for symptoms, test if symptomatic Wear a mask at all times on site including staff only spaces	HIGH RISK	Follow NSW health advice for Close Contacts of COVID-19
-----------------	--	-----------------------------	--	----------------------	---	------------------	---