

The Right Medicine: Paths out of Alcohol & Other Drug Use

Webinar 2: Mental Health Comorbidity
and Stigma in AOD Patients

WE ACKNOWLEDGE THE TRADITIONAL OWNERS & CUSTODIANS OF THE
LAND THAT WE LIVE & WORK ON AS THE FIRST PEOPLE OF THIS COUNTRY.



HNECC PHN

Mental Health & Psychosis in Alcohol & Other Drug Patients

Richard Clancy M.Med.Sc., Grad.Dip.Epid., B.Soc.Sc., R.N.
Nursing Research Fellow, Hunter New England Mental Health
Conjoint Associate Professor, University of Newcastle

Mental Health disorders

High prevalence disorders eg. depressive disorders and anxiety



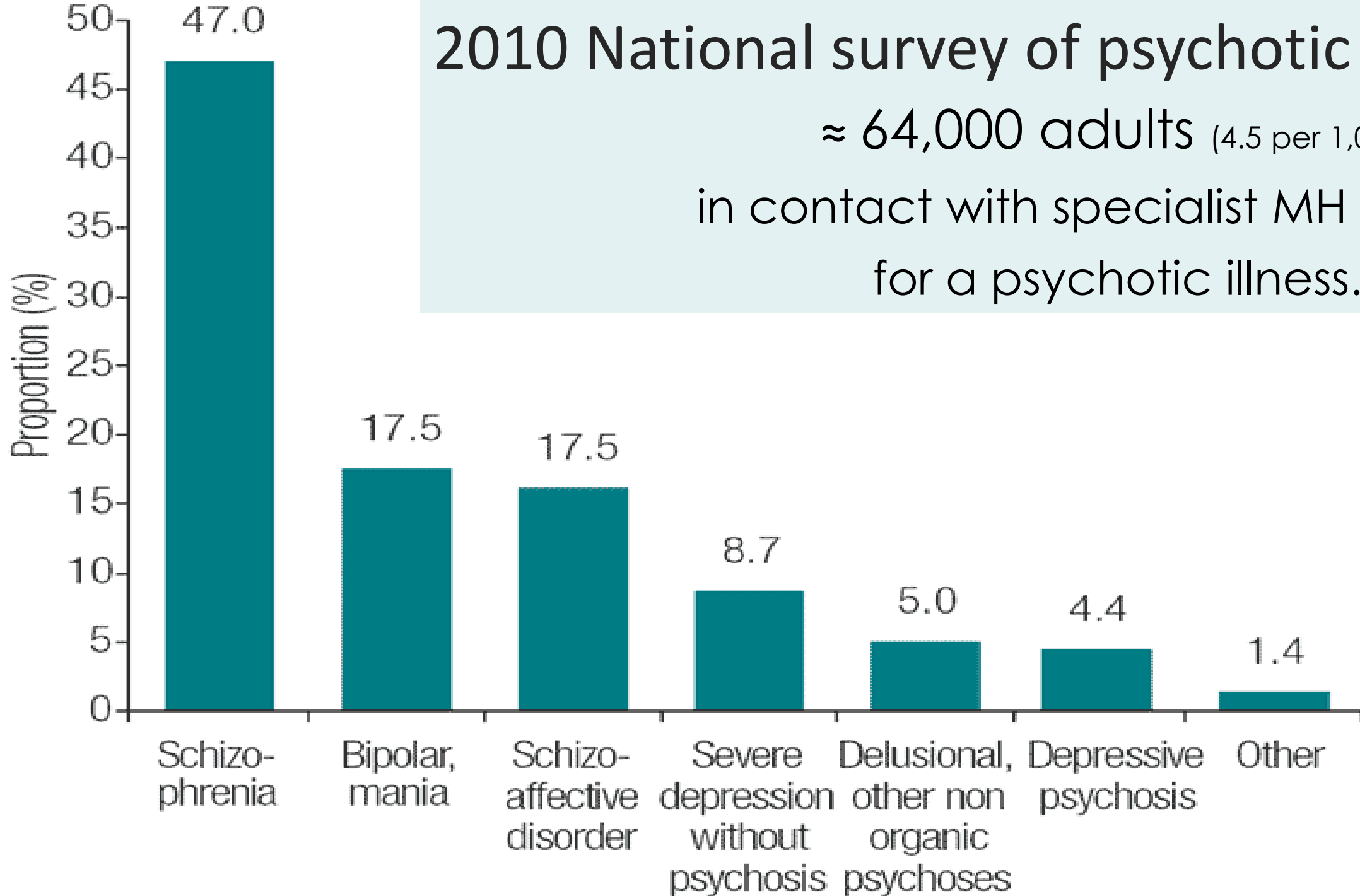
Low prevalence disorders eg. psychotic disorders



2010 National survey of psychotic illness

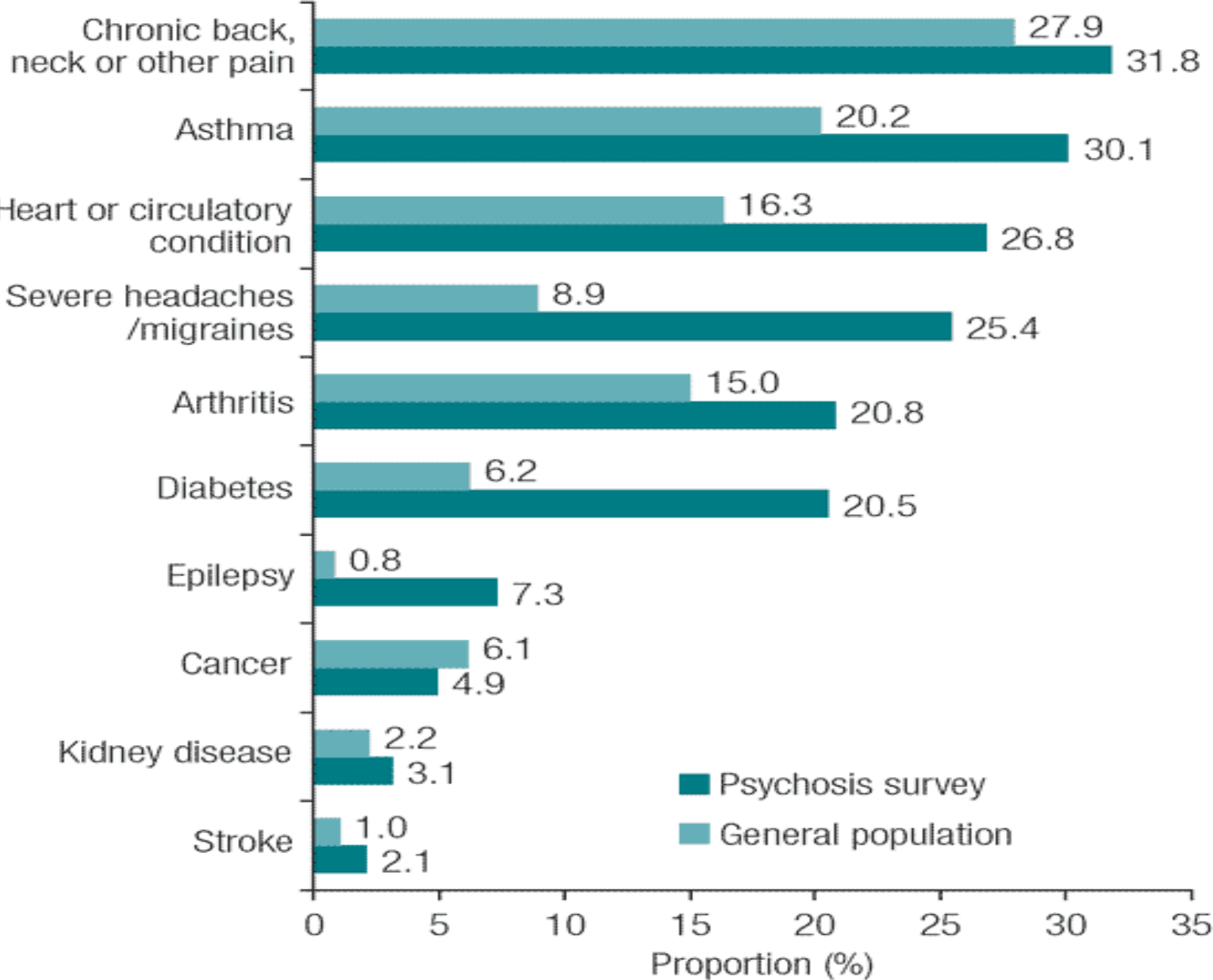
≈ 64,000 adults (4.5 per 1,000)

in contact with specialist MH services
for a psychotic illness.



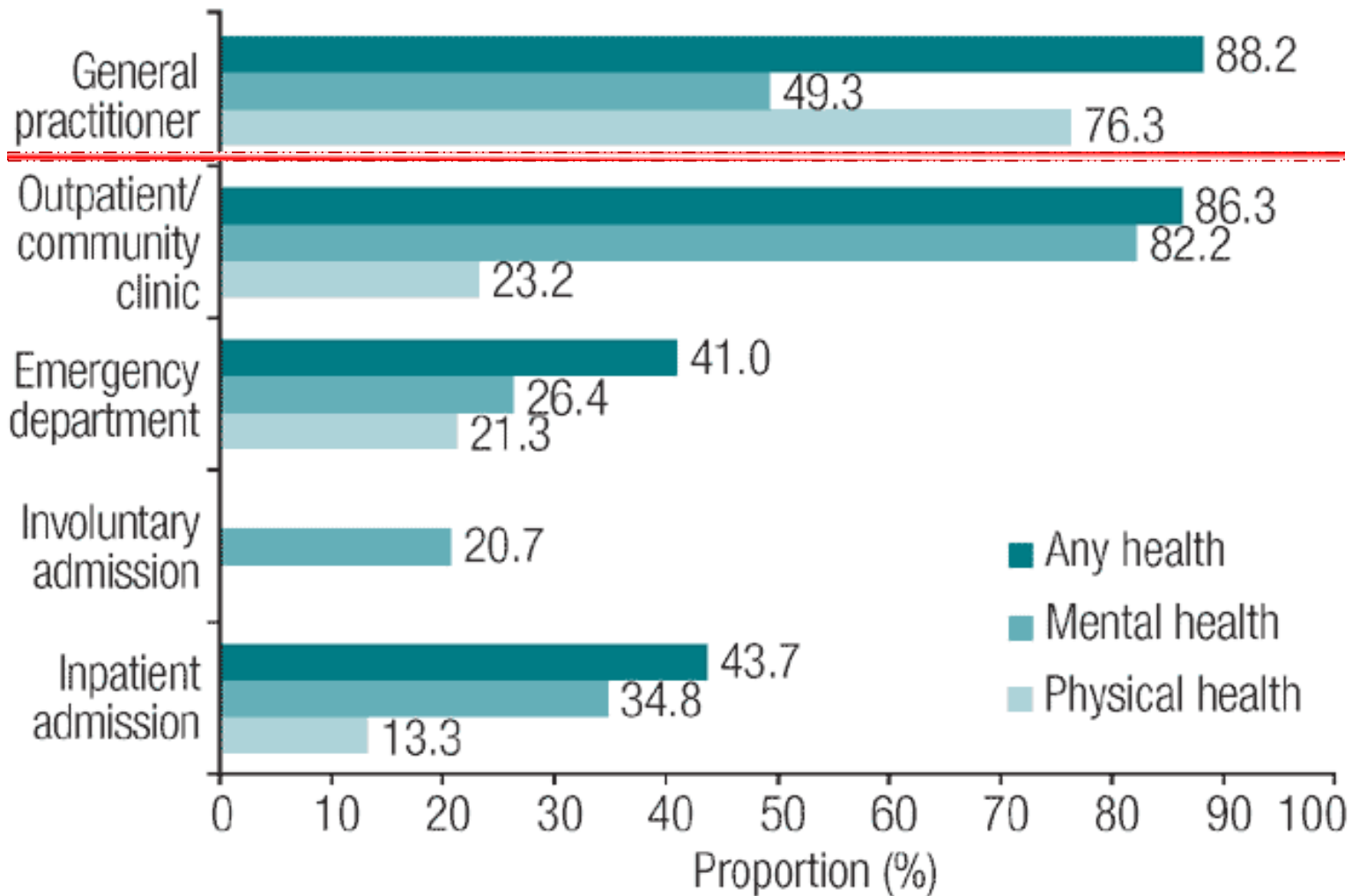
Chronic Comorbidities

2010 National survey
of psychotic illness

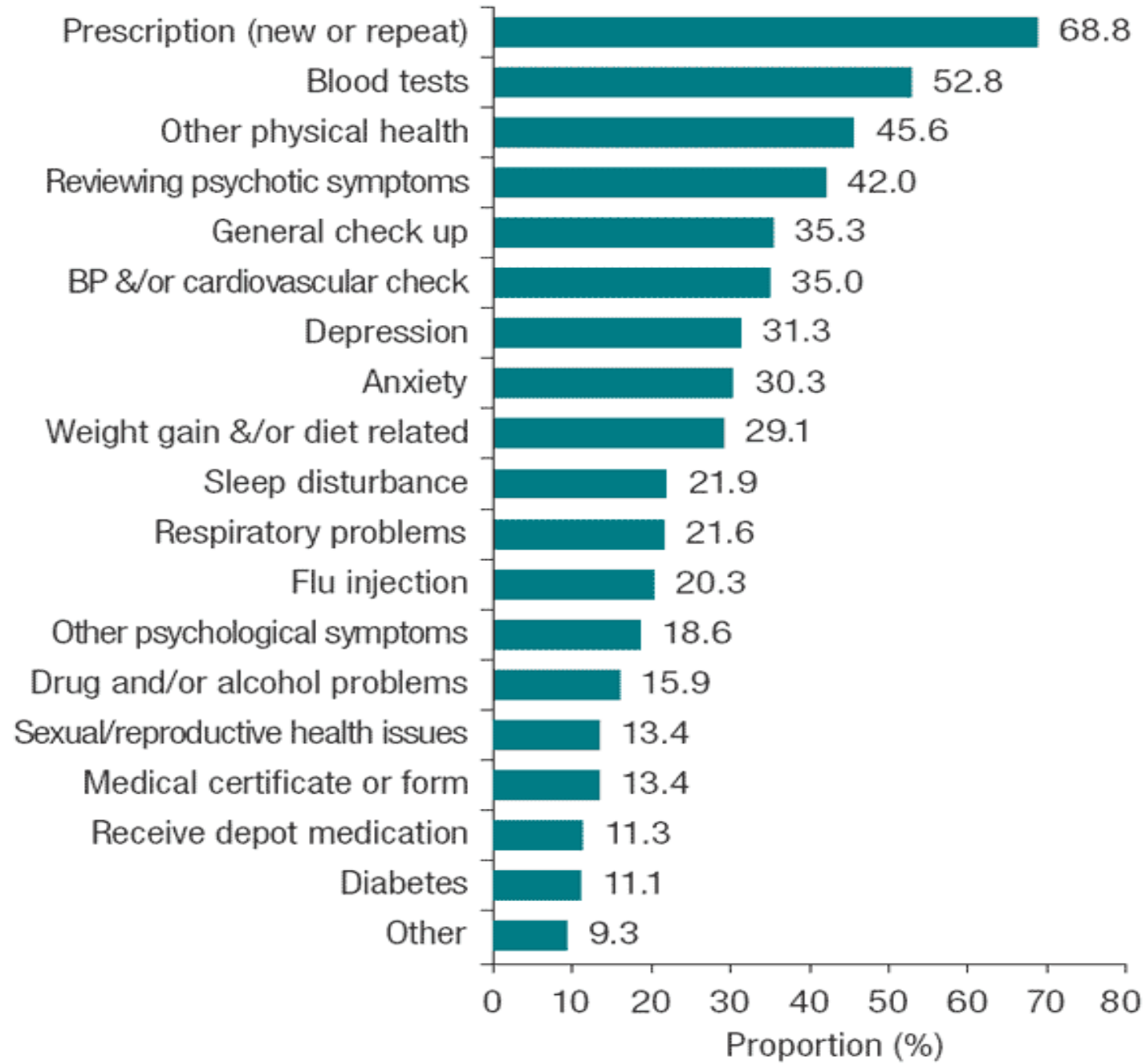


Service use in the last year

2010 National survey of psychotic illness



Reason for GP consult



2010 National survey of psychotic illness

General Practitioner Services

88% of people with psychotic illness visited a GP in the past year

vs 79% of general population

Onset

I = Intoxication
W = Withdrawal

P = Persisting

Substance Induced Disorders

DSM-5	Psychotic	Bipolar	Depression	Anxiety	Sleep	Sexual	Delerium	Neuro cognitive
Alcohol	I/W	I/W	I/W	I/W	I/W	I/W	I/W	I/W/P
Caffeine				I	I/W			
Cannabis	I/W			I	I/W		I	
Hallucinogens	I	I	I	I			I	

Onset

I = Intoxication

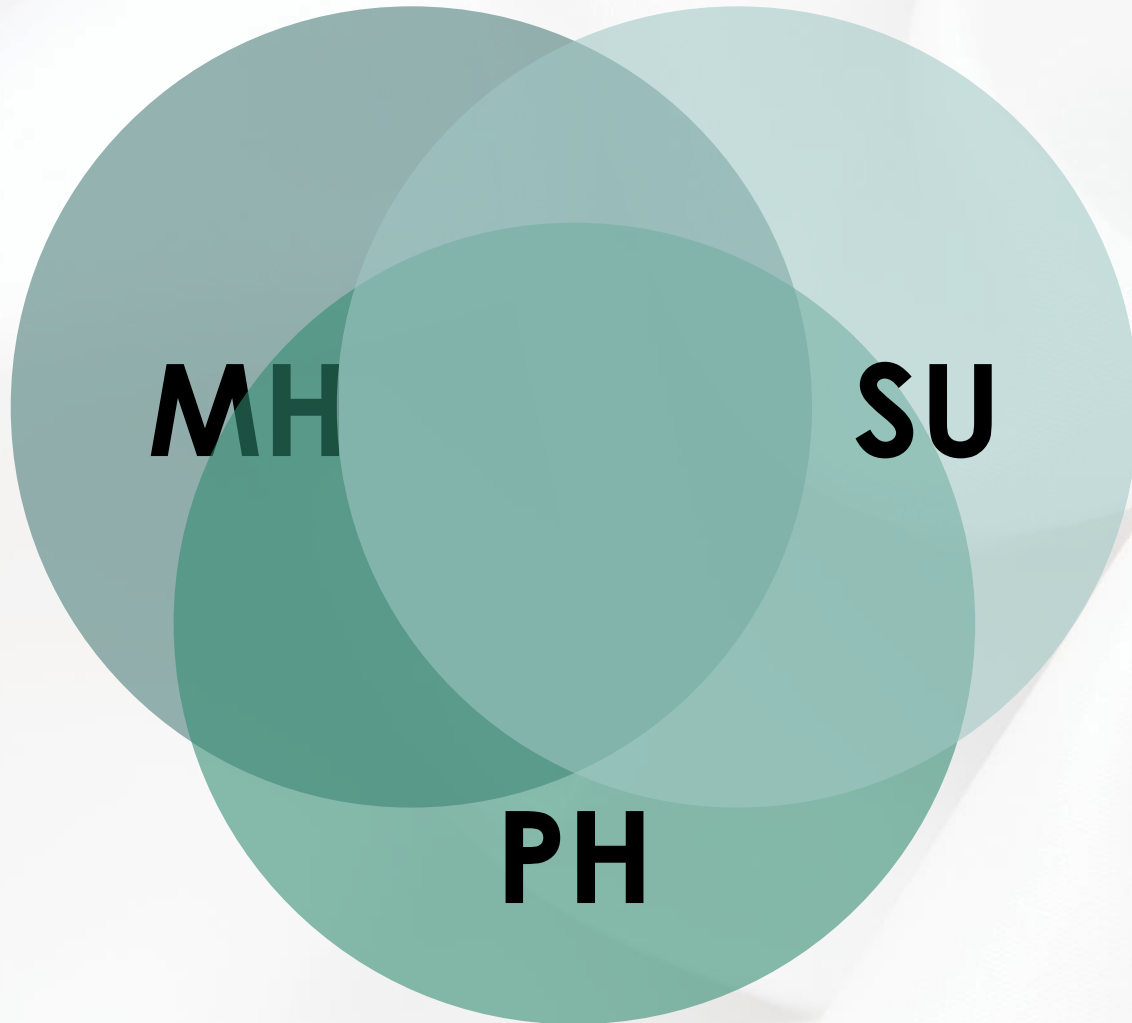
W = Withdrawal

P = Persisting

Substance Induced Disorders

DSM-5	Psychotic	Bipolar	Depression	Anxiety	Sleep	Sexual	Delirium	Neuro cognitive
Inhalants	I		I	I			I	I/P
Opioids			I/W	W	I/W	I/W	I/W	
Sedatives	I/W	I/W	I/W	W	I/W	I/W	I/W	I/W/P
Stimulants	I	I/W	I/W	W	I/W	I	I	

Diagnostic issues



Mental State Examination

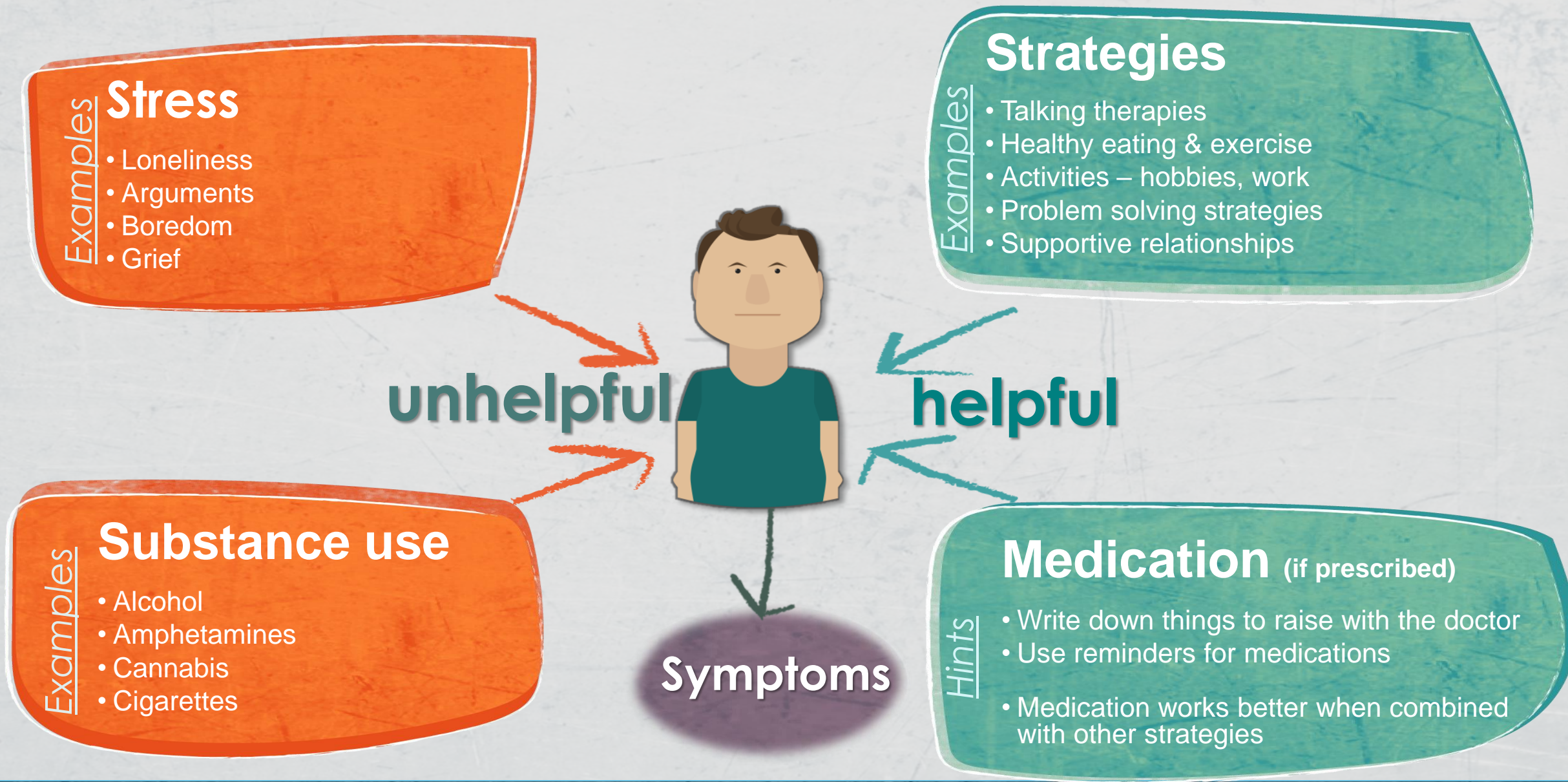
- Appearance
- Behavior / psychomotor activity
- Attitude toward examiner (interviewer)
- Affect and mood
- Speech and thought
- Perceptual disturbances
- Cognition
- Insight & judgment

In conjunction with physical, substance use assessment, history & collateral information

Simple, consistent messages

- Provide information to carers and to patient
- Discuss temporal relationship between using and symptoms
- Accept that not all substance has obvious –ve consequences

Stress-Vulnerability Framework

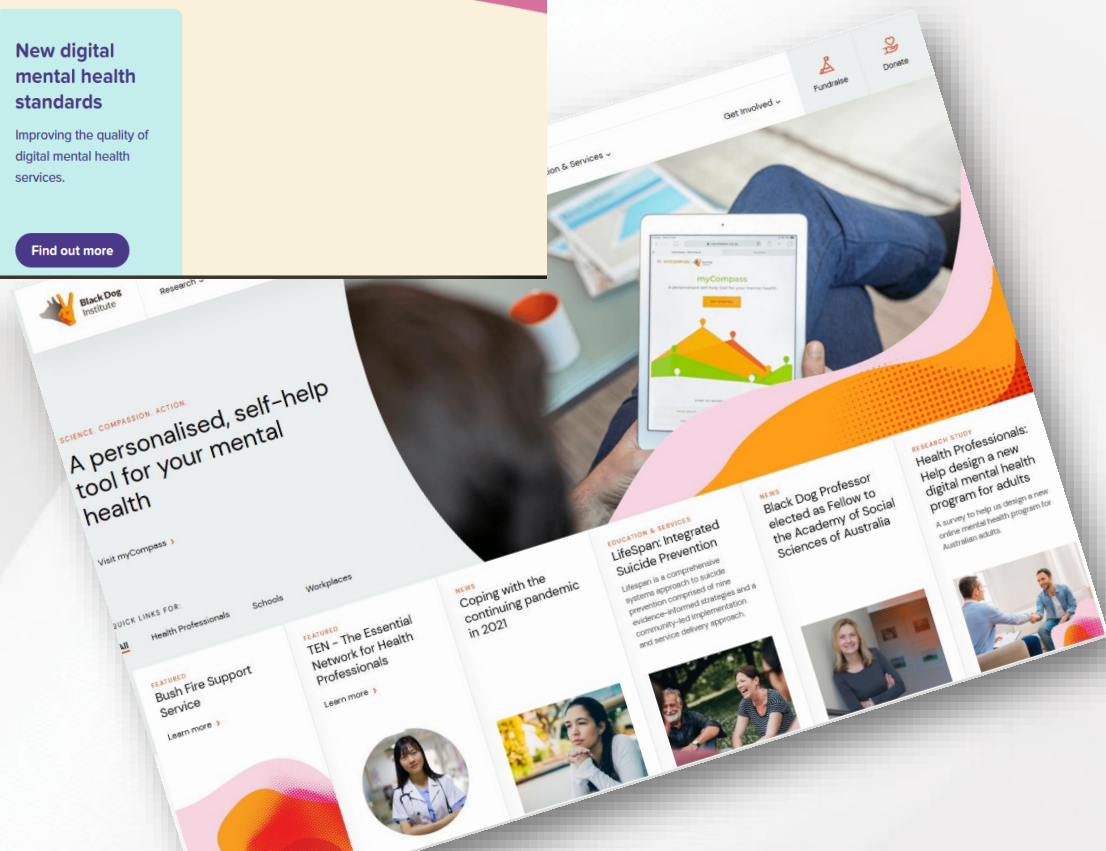
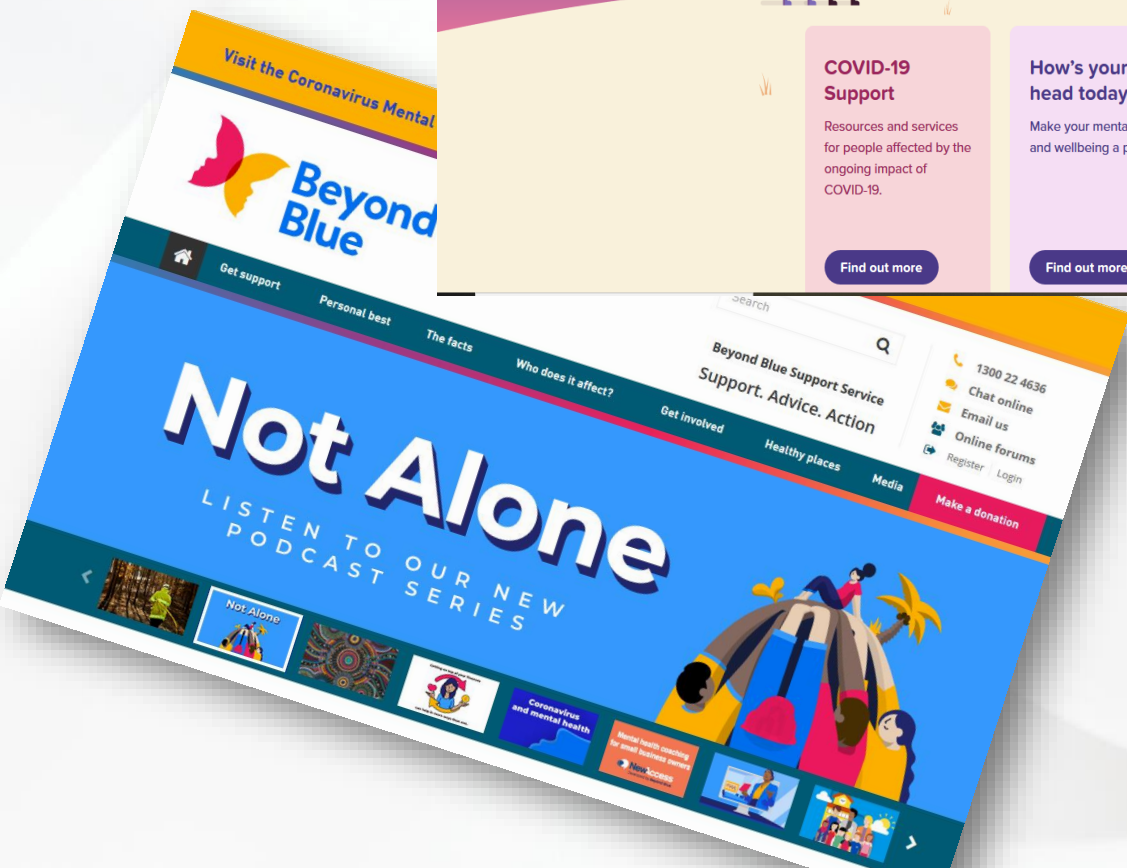
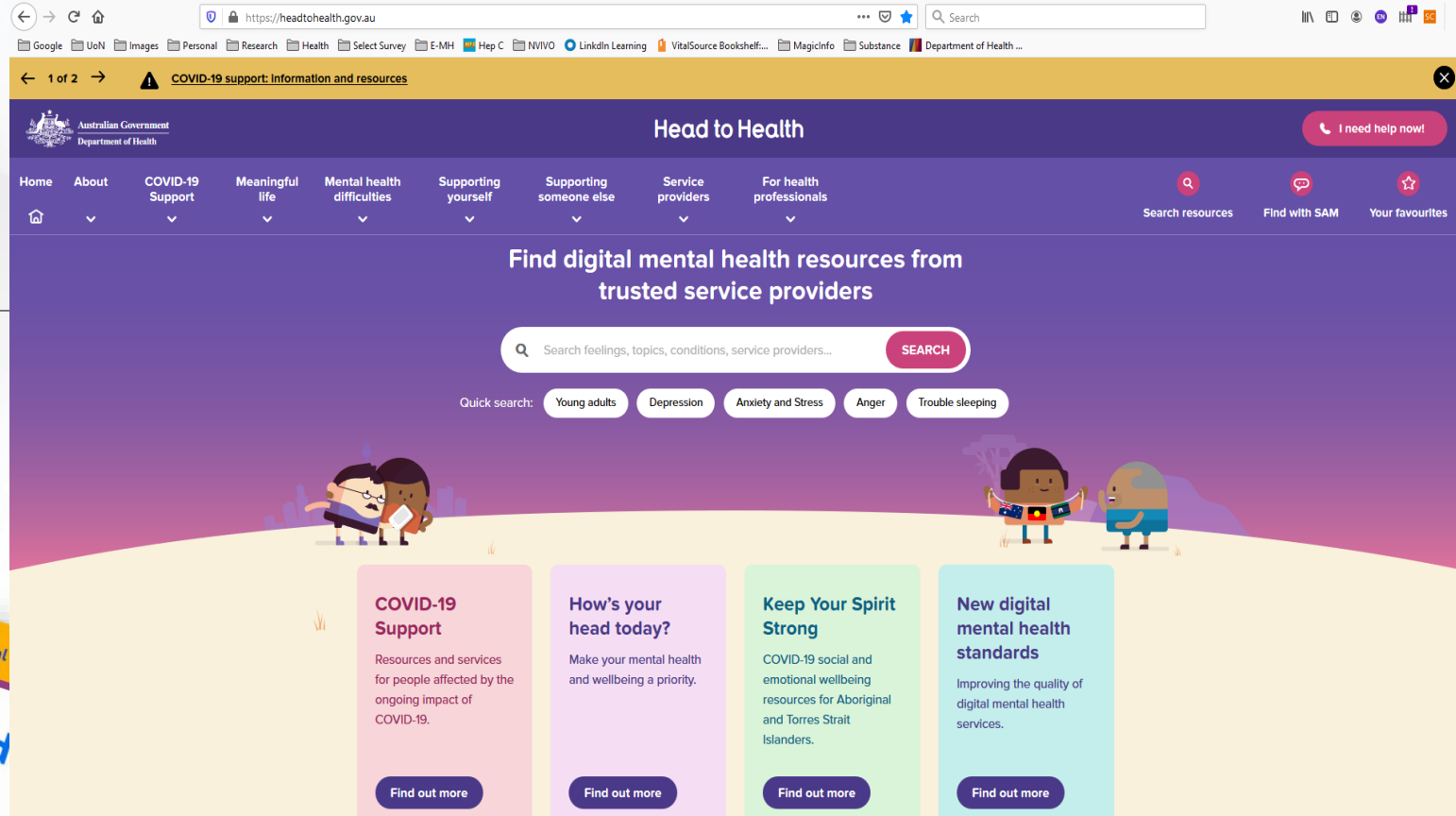


Consider...

- Safety
 - Patient
 - Carers
 - Your own
 - Others
- Withdrawal risk
- Behaviour in intoxication
- Iatrogenic harms – (med. side effects, dependence – benzos & opioids)

Consider...

- Encourage carer involvement
- MH Plan / long appointments
- Morning appointments
- Assessment ongoing
- Other service providers – involvement, communication, contact numbers
- Self help organisations
- Online resources





Hunter New England

- Home
- COVID-19
- About HealthPathways
- Acute Services
- Allied Health Referrals
- Child Health
- Care in the Last 12 Months of Life
- Investigations
- Lifestyle & Preventive Care
- Medical
- Mental Health**
- Older Persons' Health
- Therapeutics
- Public Health
- Specific Populations
- Surgical
- Women's Health
- Our Health System
- Service Directories

Hunter New England

COMMUNITY

HEALTHPATHWAYS

! Health Alert

NSW Health:

- [Latest COVID-19 Case Locations and Alerts in NSW](#)
- [Interstate and New Zealand COVID-19 Case Locations](#)
- [Media releases](#)

NSW Government – [Travel to and from NSW](#)

See [HNE Health Media releases](#) for latest HNE Public Health Alerts.

See [COVID-19 Referrals](#) for current testing options, and follow links on the [COVID-19 page](#) for all other information.

Latest News

15 September

📌 Hunter New England Community HealthPathways Fact Sheet

Pathway Updates

Updated – 5 February
[Chronic Hepatitis B](#)

Updated – 1 February
[Podiatry Referrals](#)

Updated – 21 January
[Carpal Tunnel Syndrome](#)

Updated – 21 January
[Eating Disorders in Adults](#)

Updated – 15 January
[Fetal Alcohol Spectrum Disorder \(FASD\)](#)

[VIEW MORE UPDATES...](#)

📄 E-REFERRAL

👤 PATIENT INFO

📁 PROVIDER DIRECTORIES

🏠 DOCTORS HEALTH ADVISORY SERV

📄 RACGP

📄 THERAPEUTICS

🌿 HOSPITAL HEALTHPATHWAYS

📄 USEFUL LINKS

-
- Individual
 - Family / supports

Mental Health

Mental Health Line
1800 011 511



24-hour Mental Health | telephone access service
In life-threatening situations call 000 for immediate help

Mental Health & Substance Use Service 403 35 600

Group programs for people with comorbid issues – NO emergency response

Waiting list