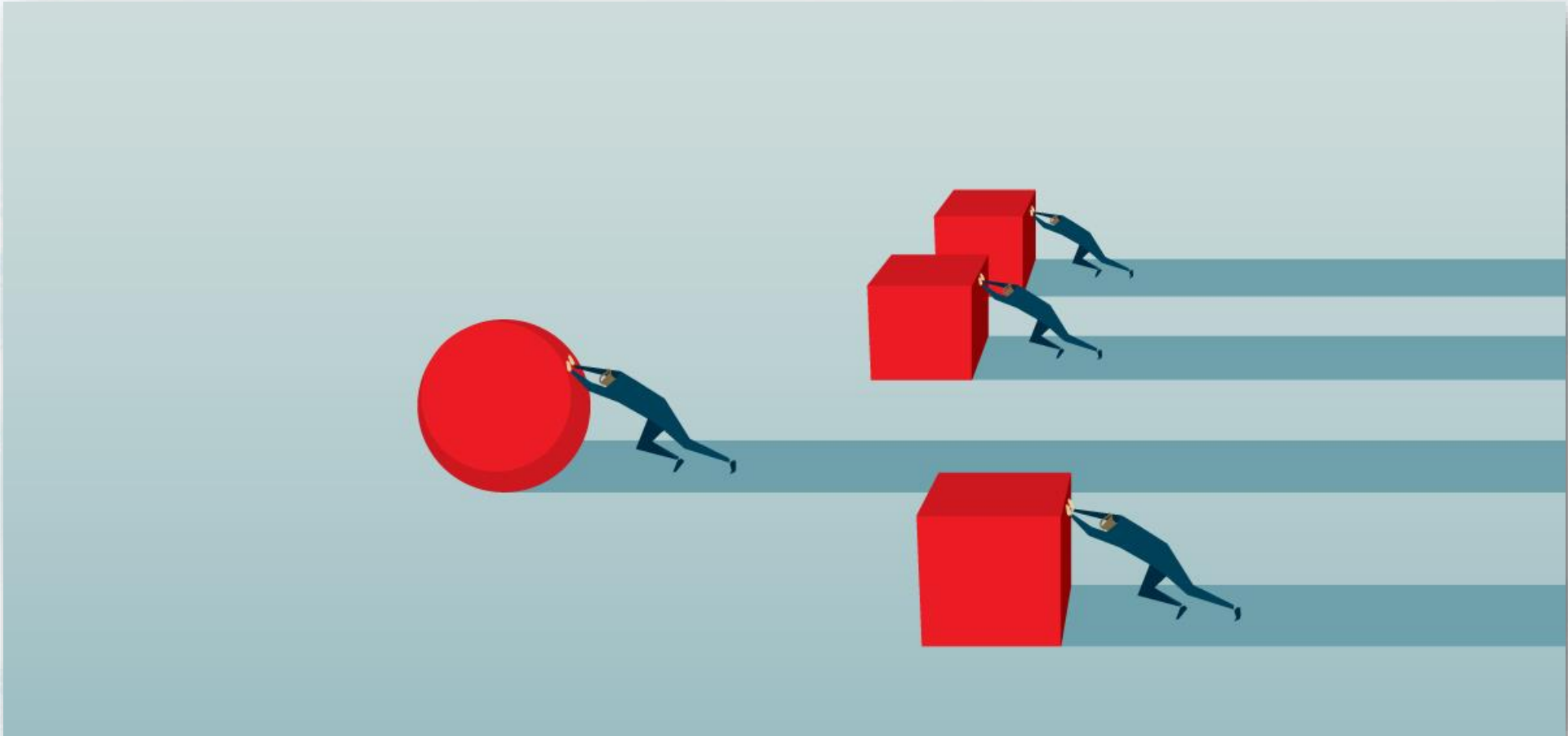


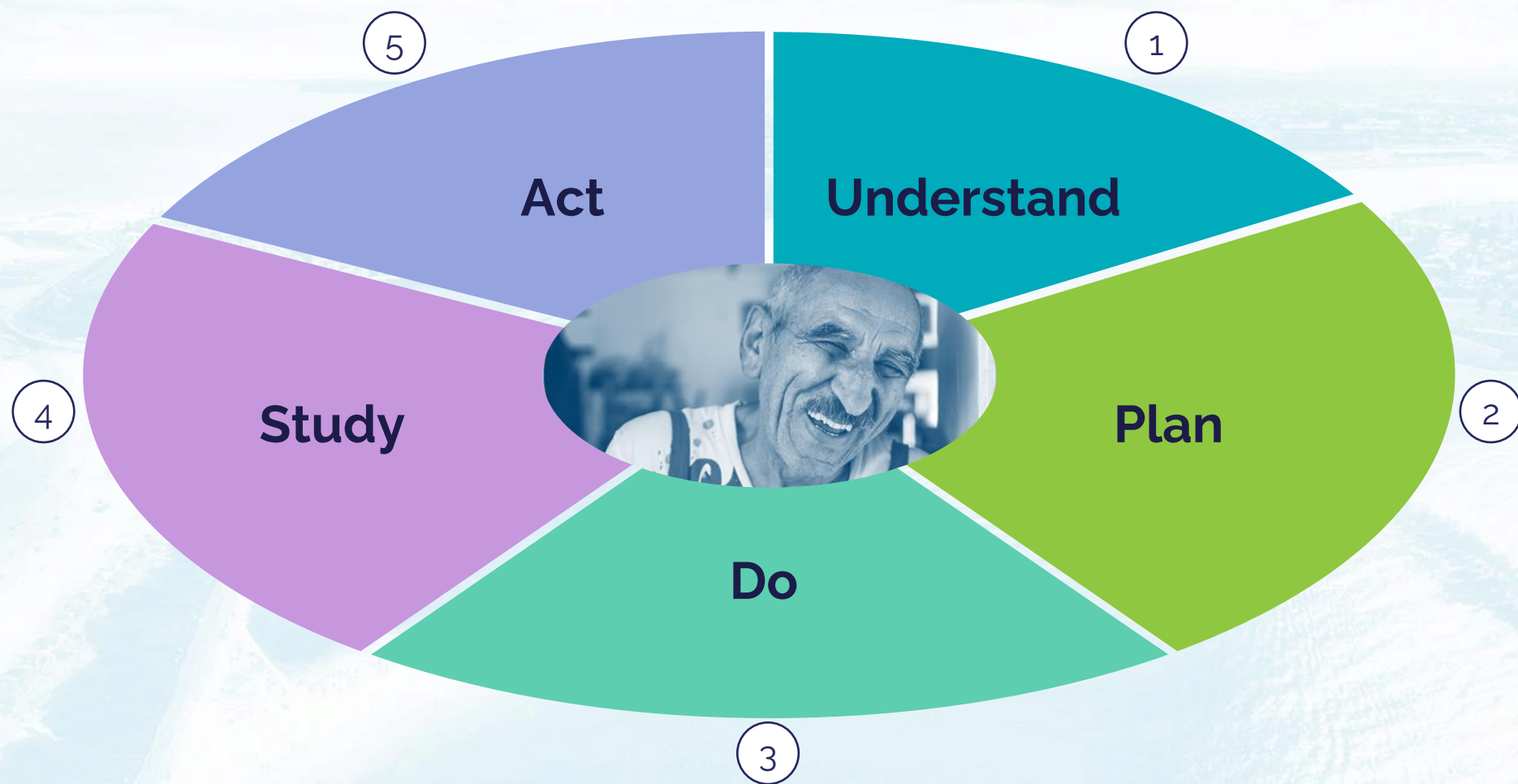
Advancing the Frontier of Regional PHN Commissioning

Momentum – Advancing Outcomes and Equity

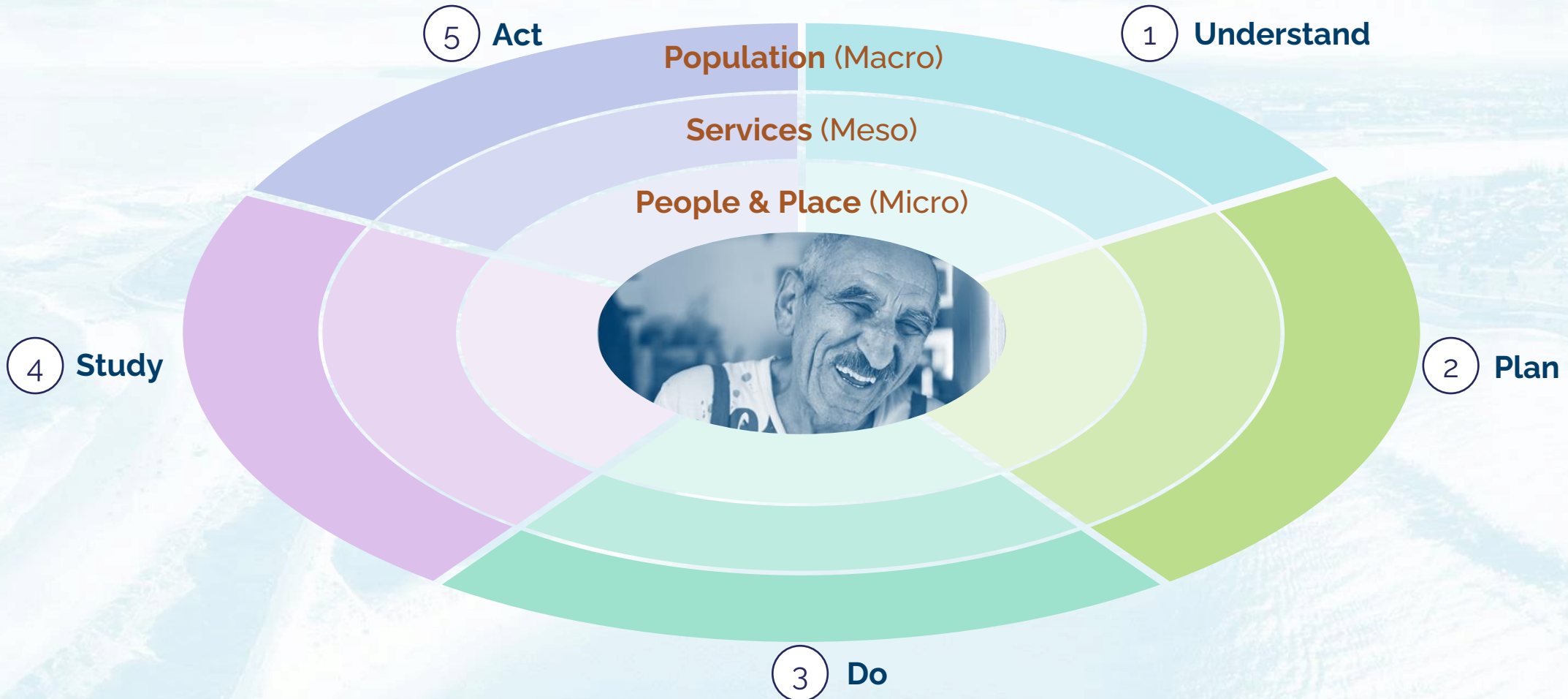
How can we accelerate improvements in the health and wellbeing of the communities you serve?



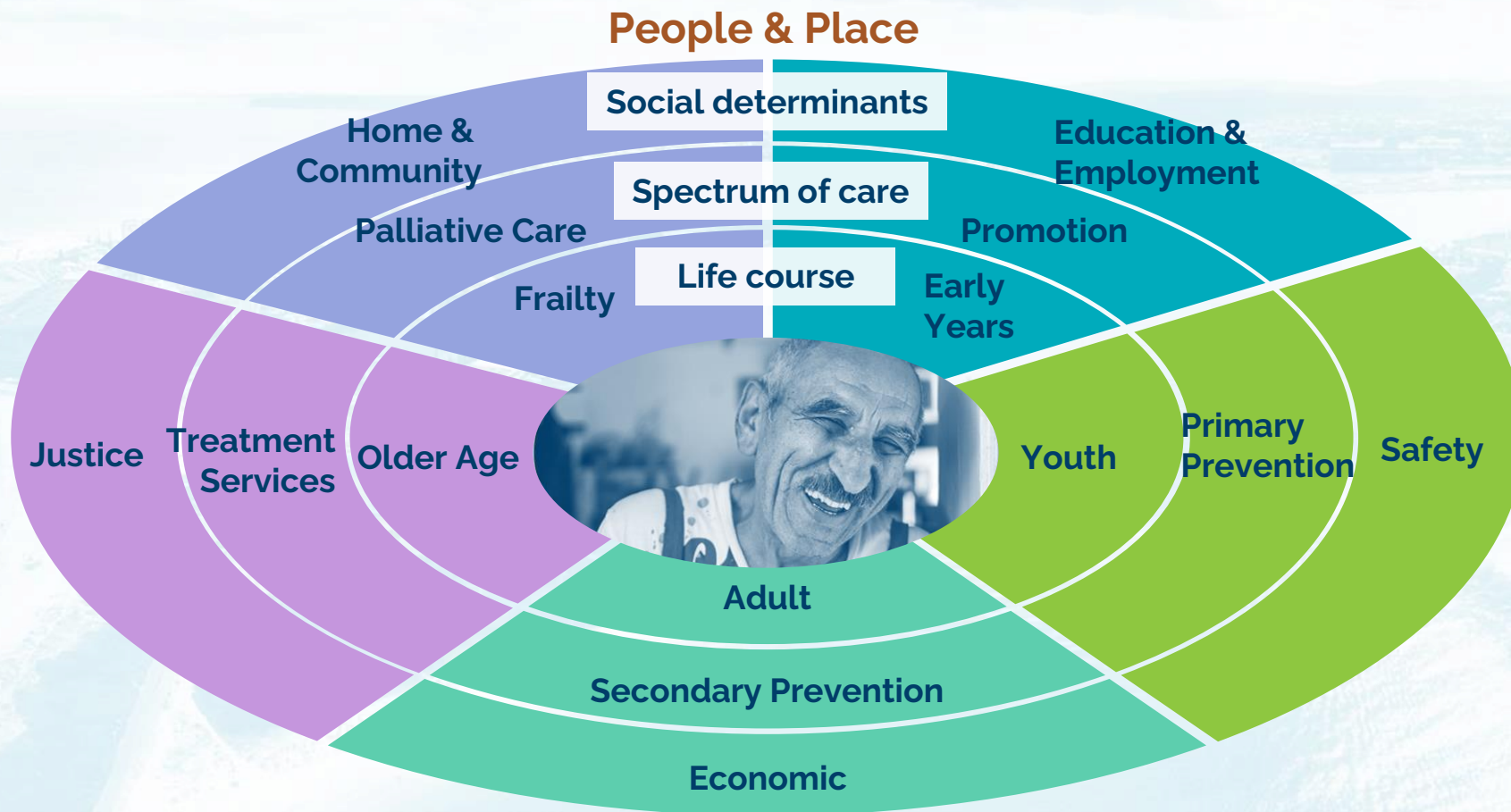
We need to create systems where learning and improvement is embedded in everything we do



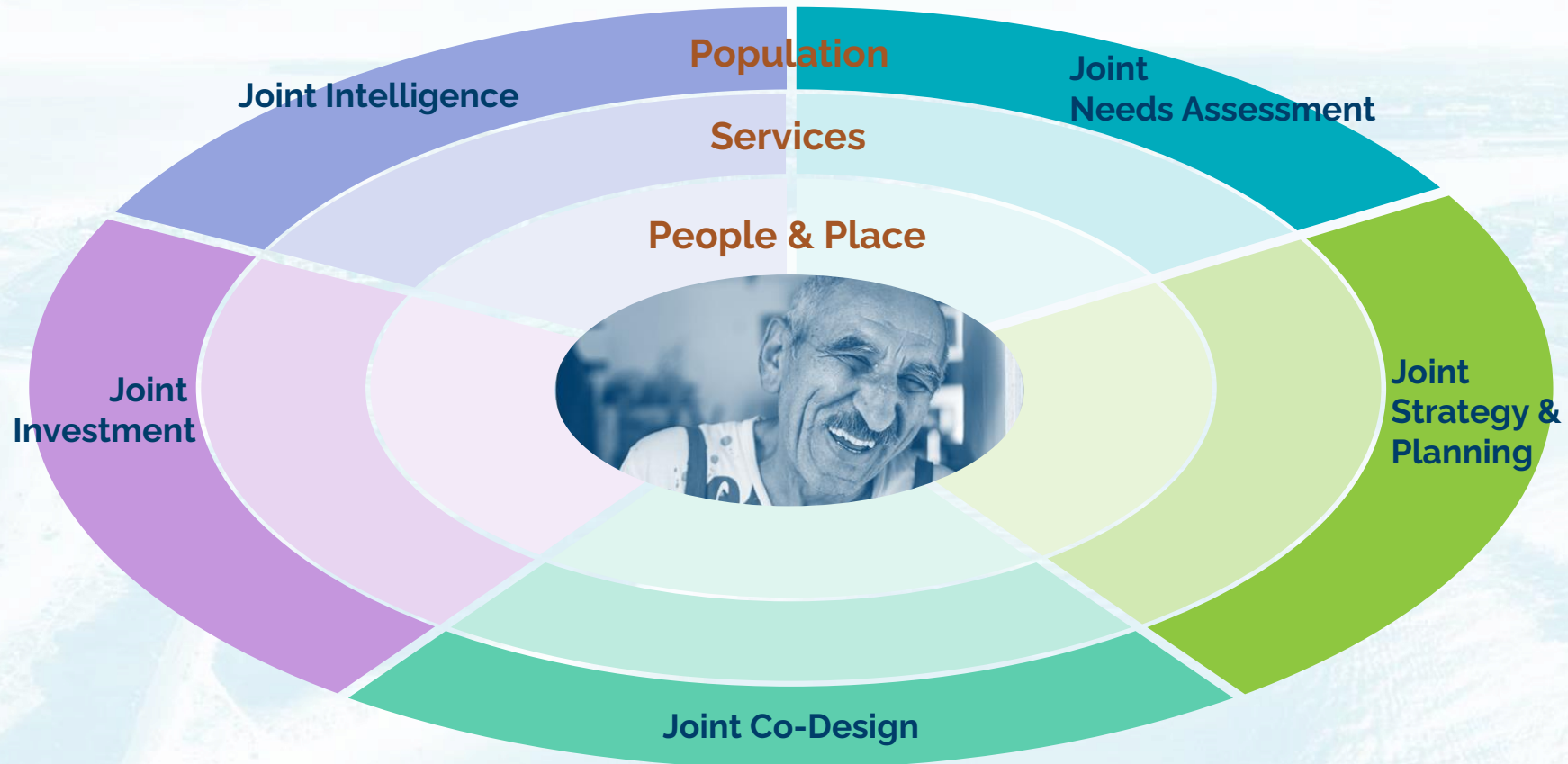
To accelerate health improvement, we need to embed continuous learning for individuals, services and populations



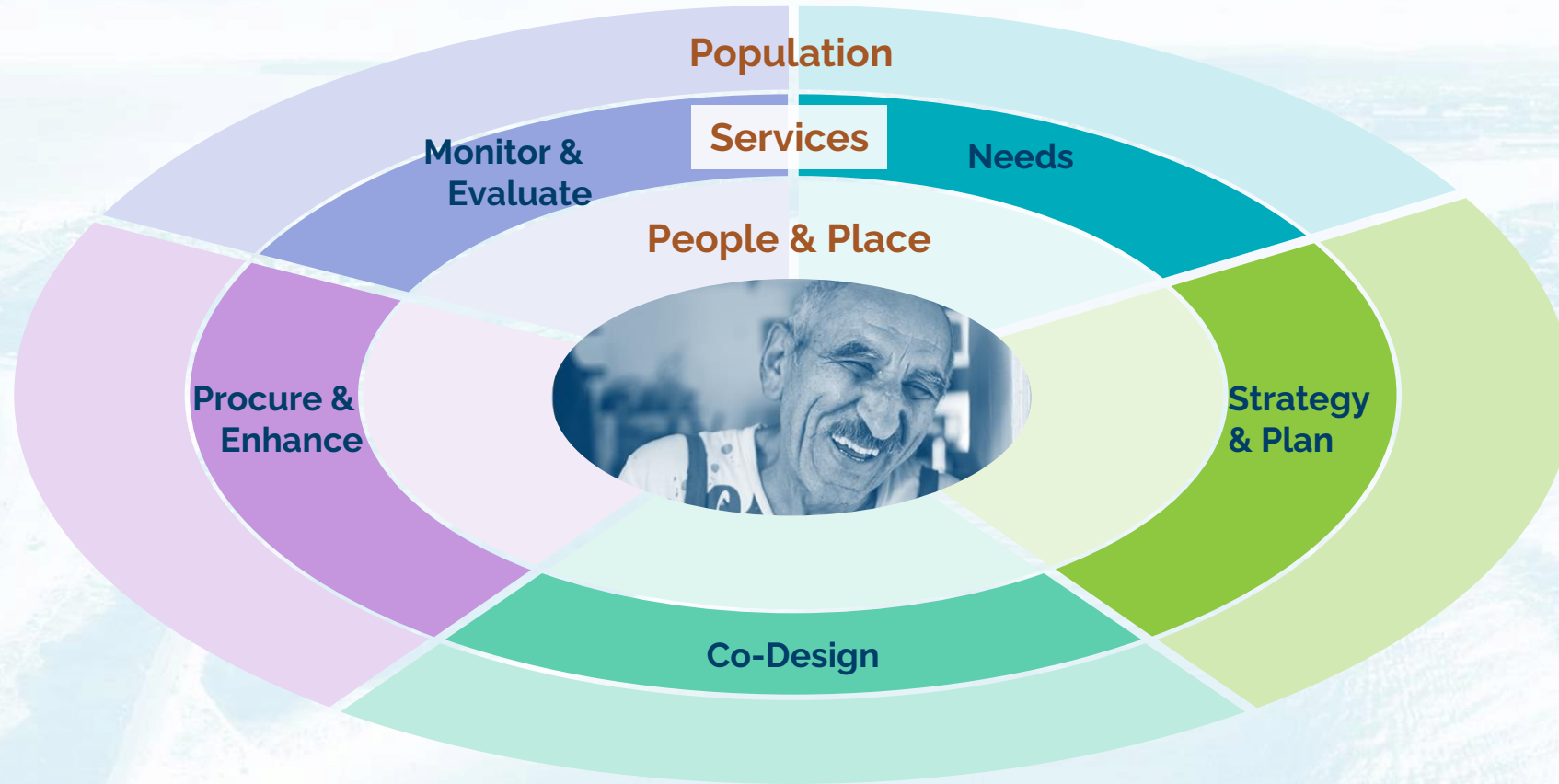
'Care about me' starts by thinking about what matters to individual people and their lives



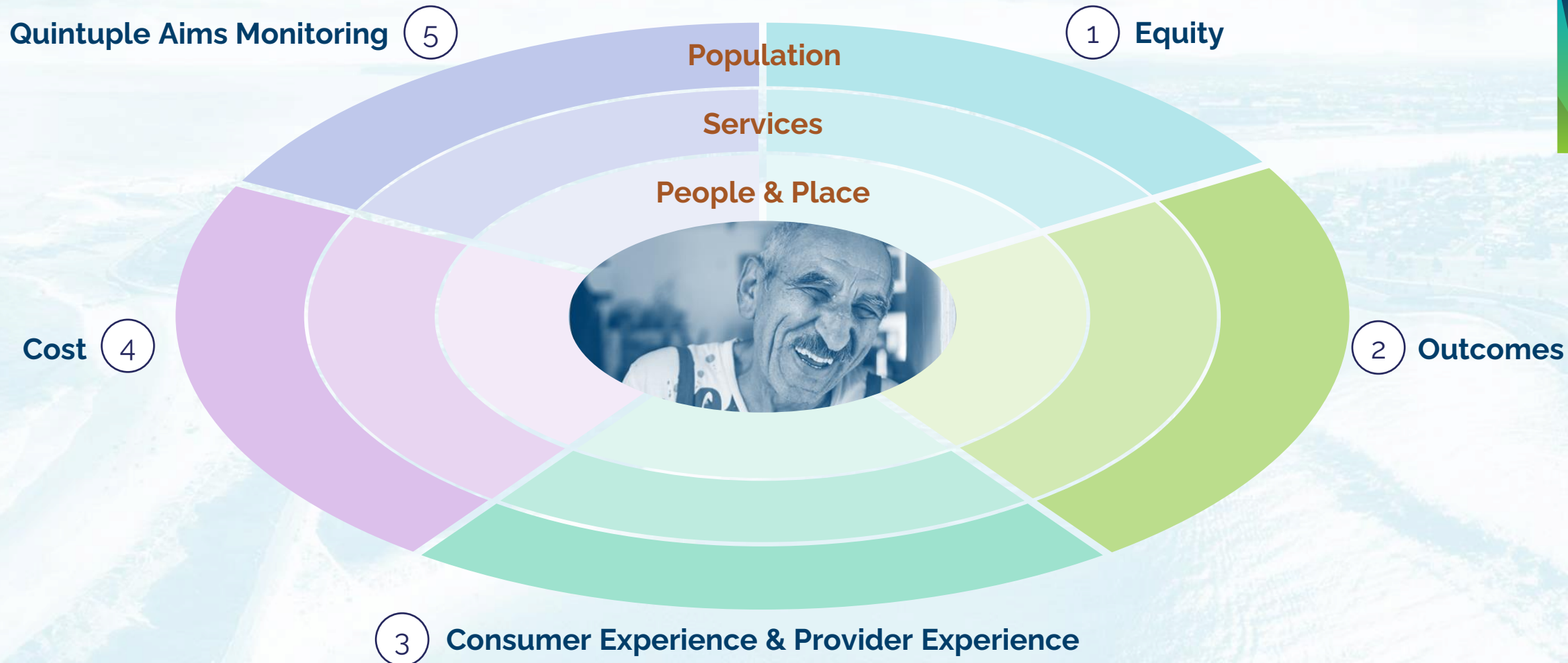
Commissioning jointly with system partners enables PHNs to commission 'care' about me'



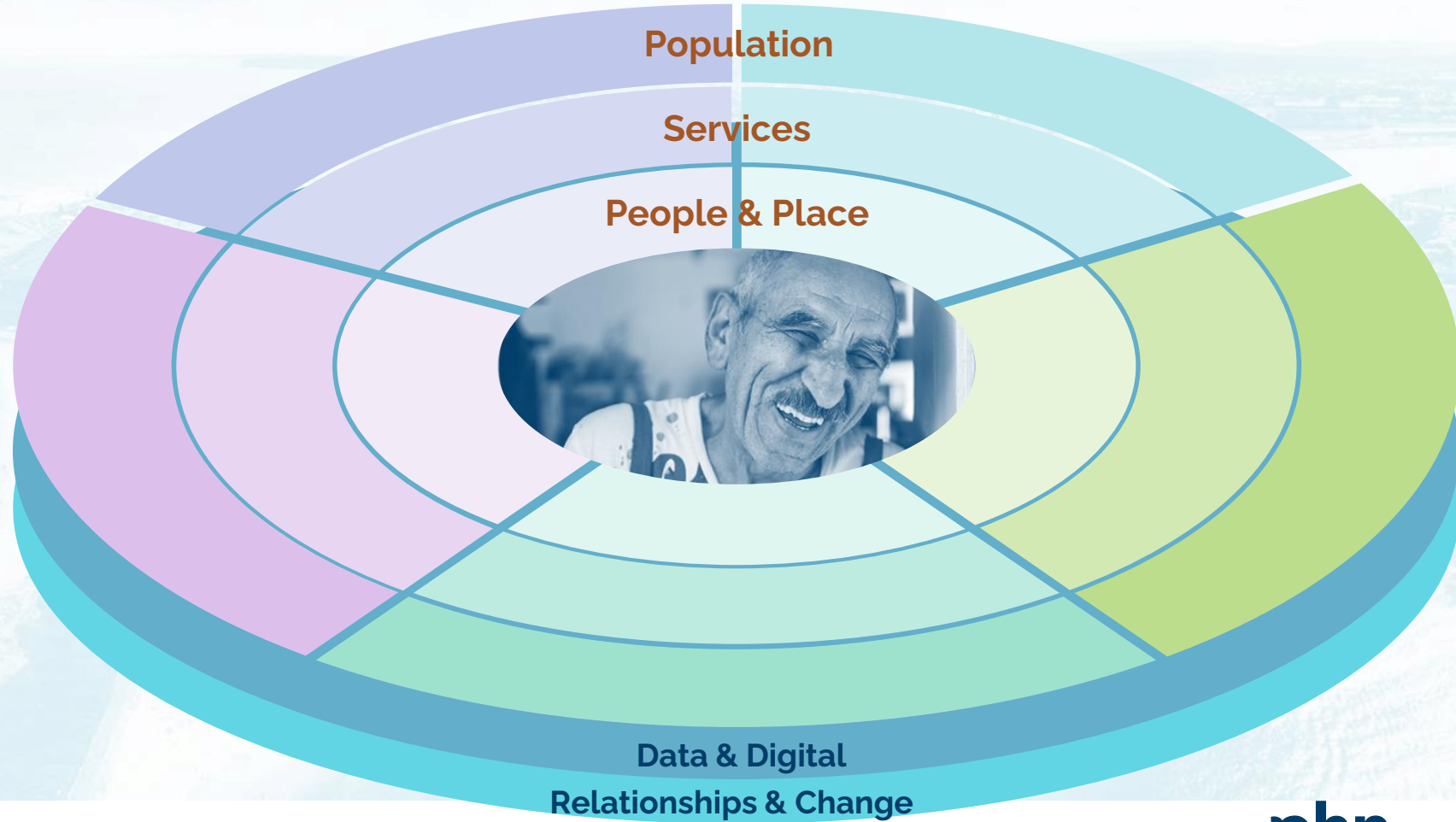
At its heart, commissioning is a continuous improvement process to uplift health & wellbeing for people



Creating a learning system at every level will advance the quintuple aims and deliver value based care

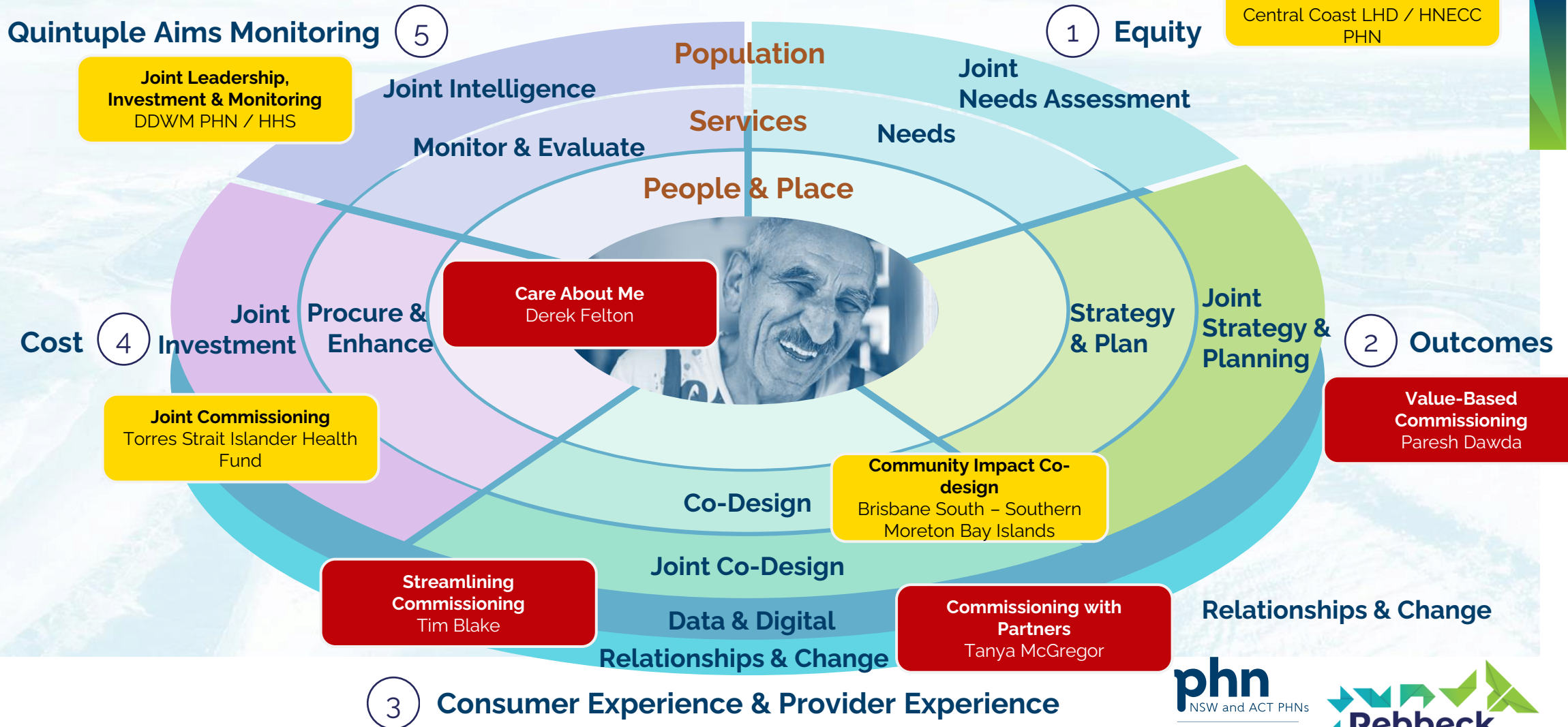


The improvement process must be enabled by digital / data and relationships / change management

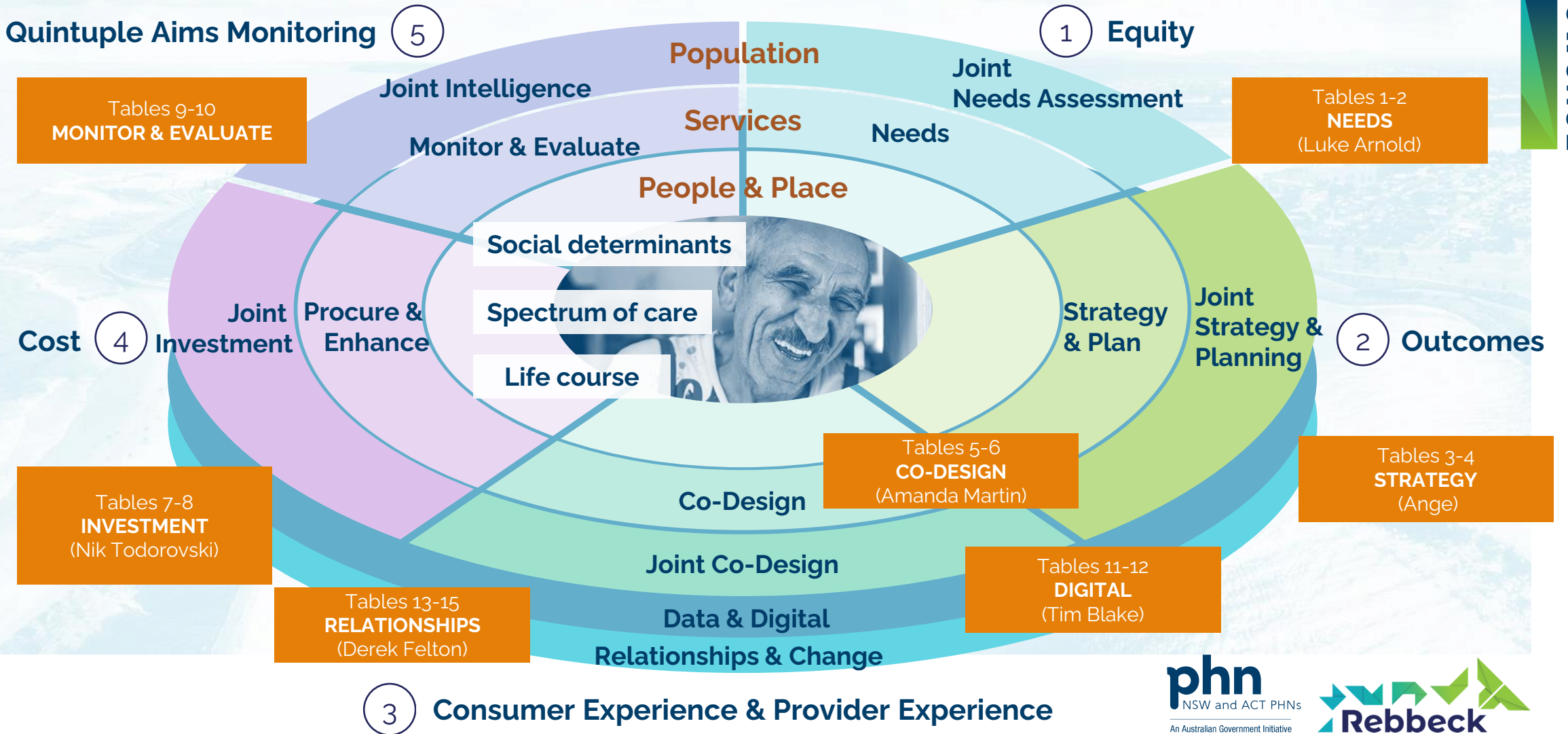


This event highlights how well PHNs are advancing the frontier of PHN commissioning

2023 THE SHOWCASE



Group exercise: How can PHNs advance commissioning across each of these learning steps?





Rebbeck
205 / 275 Alfred St N
North Sydney
NSW 2060
Australia
0414 400 524
jay@rebbeck.com
www.rebbeck.com